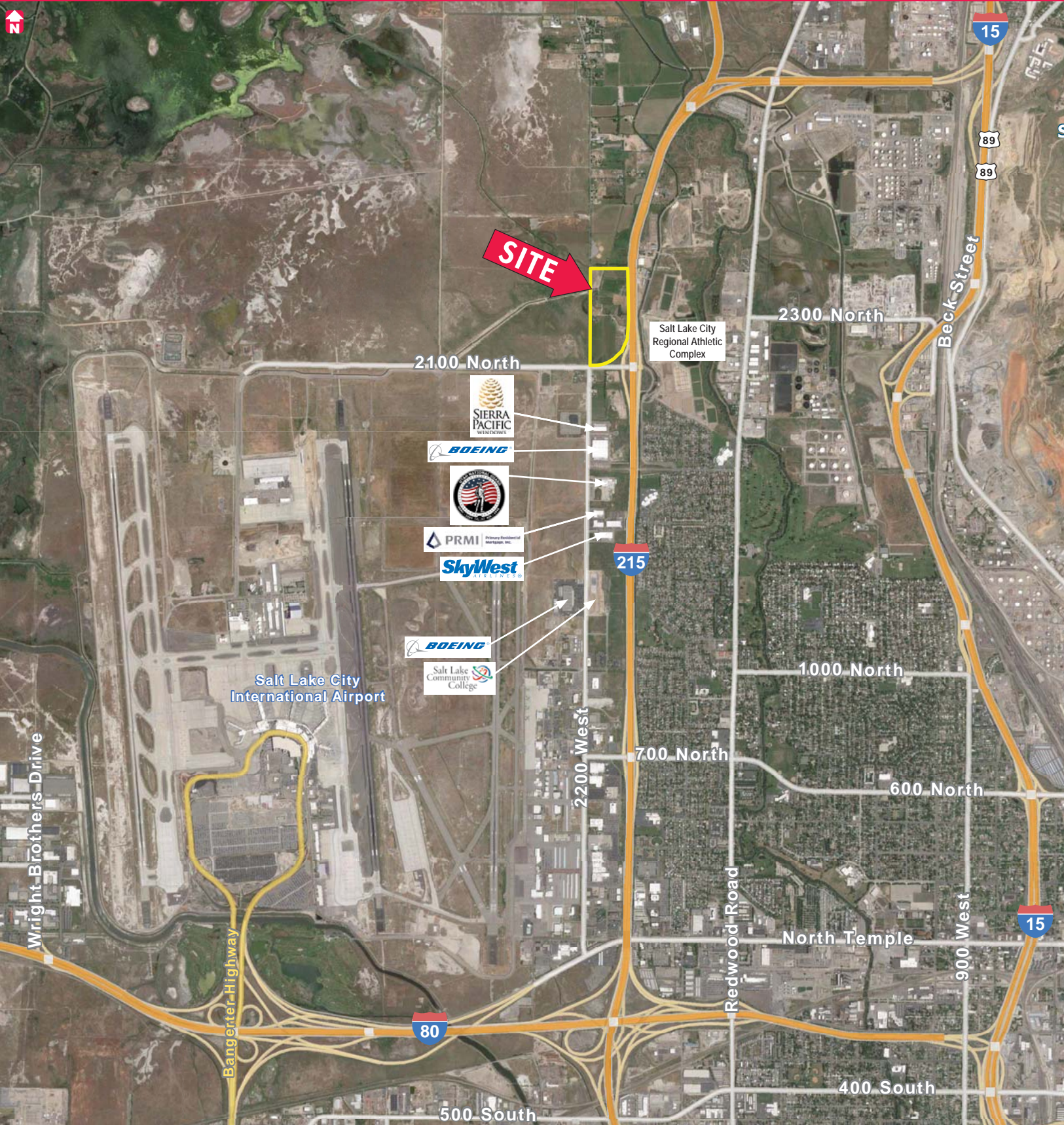


I-215 COMMERCE CENTER IS COMING

2260 North 2200 West | Salt Lake City | Utah | 84101



I-215 COMMERCE CENTER IS COMING

2260 North 2200 West | Salt Lake City | Utah | 84101



One Mile from the Salt Lake International Freight Terminal – UPS, FedEx and DHL

PROPERTY FEATURES

- 921,600 Total Square Feet
- Phase I - 418,700 SF
 - Building A: 323,000 SF
 - Building B: 95,700 SF
- Phase II - 502,900 SF
- 32’ Clear Height
- Lease Sizes Starting at 25,000 SF
- Build-to-Suit Office Space
- Prime Freeway Exposure
- Quick Access from I-215/2200 North Exit - No Stop Lights!
- 2200 North Exit is the Main I-215 Exit to Access the North Side of the Salt Lake International Airport
- First I-215 Exist South of Legacy Highway
- Traffic Counts:
 - I-215: 66,985 cars/day
- 10 Minutes from the Salt Lake International Airport, 9 Minutes from Downtown Salt Lake City and 14 minutes from the Internodal Yard

FOR MORE
INFORMATION
CONTACT

STEVE CONDIE, CCIM, SIOR
801.578.5511
scondie@ngacres.com

This statement with the information it contains is given with the understanding that all negotiations relating to the purchase, renting or leasing of the property described above shall be conducted through this office. The above information while not guaranteed has been secured from sources we believe to be reliable.

I-215 COMMERCE CENTER IS COMING

2260 North 2200 West | Salt Lake City | Utah | 84101

