

3250 Lacey Road

Suite 710

*3250 Lacey Road, Downers Grove, IL
60515*

HAMILTON
www.hamiltonpartners.com **PARTNERS**



DETAILS

Square Feet: 5,521 S.F.
Net Rent: \$19.75/S.F.
OP. Expense: \$9.90/S.F.
Tax: \$2.34/S.F.
Gross Rent: \$32.82/S.F.

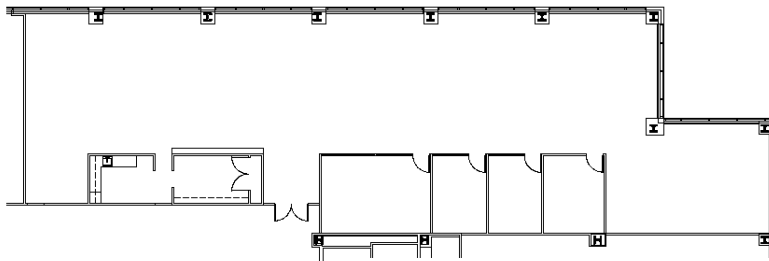
SUITE FEATURES

- Beautiful loft space with open ceiling
- Reception area with glass entry at elevator
- 3 interior private offices with glass walls
- Conference room
- Kitchen
- Fully furnished space with workstations
- Breathtaking views of Morton Arboretum
- Virtually column free space!

SEVENTH FLOOR PLAN



SPACE PLAN



HAMILTON PARTNERS - Sponsoring Broker

David Andrews

☐ da@hpre.com

C 6303270566

Philip Sheridan

☐ phil_sheridan@hpre.com

P 6307195567

C 6303032108