

3250 Lacey Road
Suite 140
3250 Lacey Road
Downers Grove, IL 60515

HAMILTON PARTNERS

www.hamiltonpartners.com



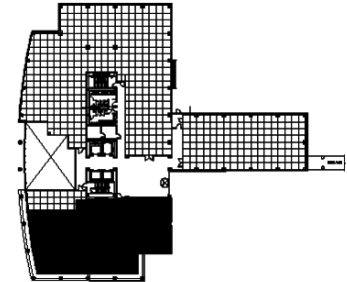
DETAILS

Square Feet: 5,870 S.F.
Net Rent: \$19.75/S.F.
OP. Expense: \$9.64/S.F.
Tax: \$2.26/S.F.
Gross Rent: \$31.65/S.F.

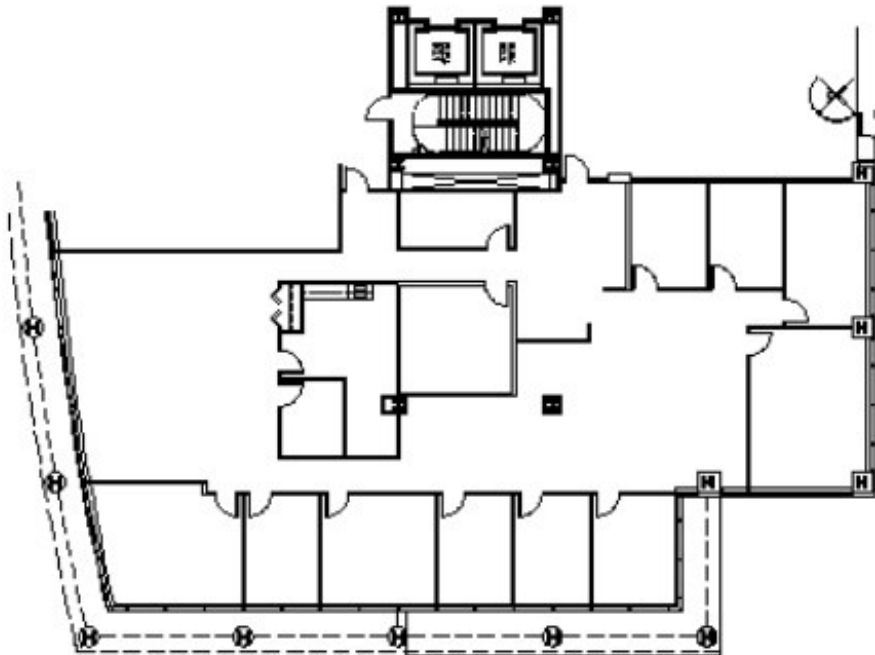
SUITE FEATURES

- Beautiful newer first floor space
- 10 private offices
- Large conference room
- Workroom
- Separate IT room
- Kitchen is central to the premises
- Glass line around the entire perimeter

FIRST FLOOR PLAN



SPACE PLAN



HAMILTON PARTNERS - Sponsoring Broker

David Andrews

☐ da@hpre.com

C 6303270566

Philip Sheridan

☐ phil_sheridan@hpre.com

P 6307195567

C 6303032108

Paul O'Connor

☐ poconnor@hamiltonpartners.com

C 6309210142