

3250 Lacey Road

Suite 600

3250 Lacey Road, Downers Grove, IL
60515

HAMILTON PARTNERS
www.hamiltonpartners.com



DETAILS

Square Feet: 21,460 S.F.

Net Rent: \$19.75/S.F.

OP. Expense: \$11.73/S.F.

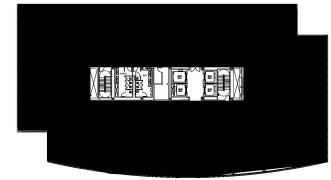
Tax: \$2.02/S.F.

Gross Rent: \$33.50/S.F.

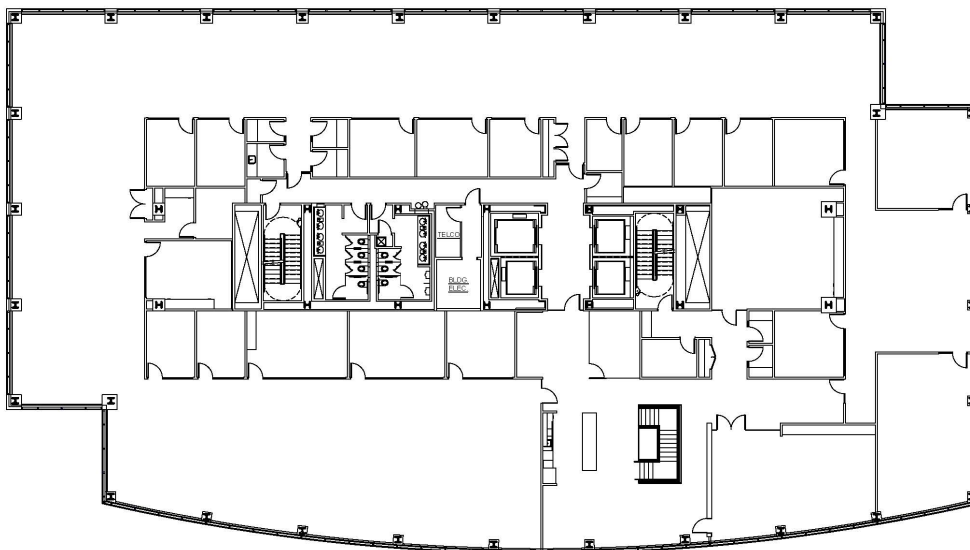
SUITE FEATURES

- Incredible modern full floor opportunity
- Fully furnished with sit/stand workstations
- Beautiful modern open ceiling concept
- Glass fronts on all offices
- High-end finishes throughout
- Impressive glass entry and open cafe
- Beautiful pond views

SIXTH FLOOR PLAN



SPACE PLAN



HAMILTON PARTNERS - Sponsoring Broker

David Andrews

✉ da@hpre.com

C 6303270566

Philip Sheridan

✉ phil_sheridan@hpre.com

P 6307195567

C 6303032108

Paul O'Connor

✉ poconnor@hamiltonpartners.com

P 630-250-4876

F 630-251-8521