

3250 Lacey Road
Suite 100 & 105
3250 Lacey Road
Downers Grove, IL 60515

HAMILTON PARTNERS

www.hamiltonpartners.com



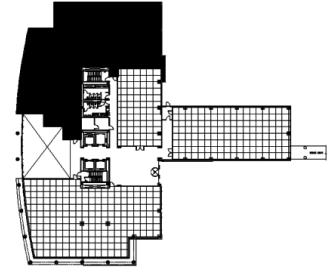
DETAILS

Square Feet: 8,243 S.F.
Net Rent: \$19.75/S.F.
OP. Expense: \$10.27/S.F.
Tax: \$2.44/S.F.
Gross Rent: \$32.46/S.F.

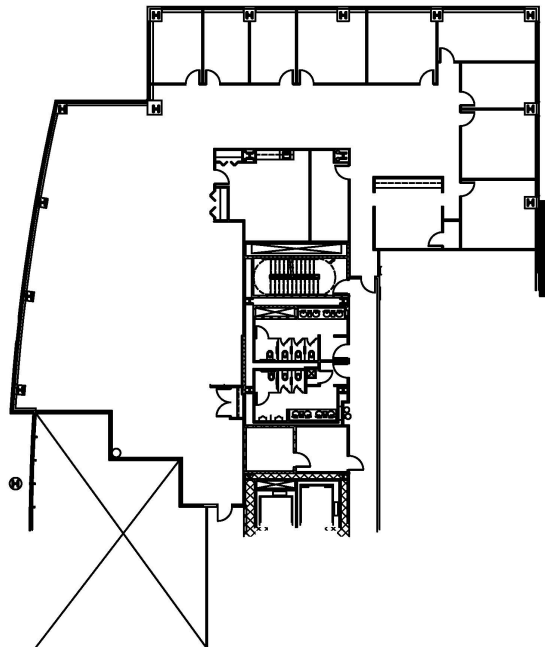
SUITE FEATURES

- 268 lineal feet of spectacular windowline!
- Beautiful views of lake and landscaping
- Reception area with glass entry in building lobby
- 9 private offices
- Eat-in kitchen
- IT Room
- Manned security in lobby
- Esplanade at Locust Point Amenities 9.24.19

FIRST FLOOR PLAN



SPACE PLAN



HAMILTON PARTNERS - Sponsoring Broker

David Andrews

☐ da@hpre.com

C 6303270566

Philip Sheridan

☐ phil_sheridan@hpre.com

P 6307195567

C 6303032108