

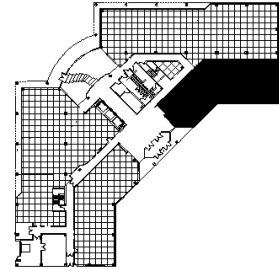
1001 Warrenville Road
Suite 175
1001 Warrenville Road, Lisle, IL 60532



SUITE FEATURES

- Incredible furnished spec suite available Fall of 2022!
- Glass entry and ID in building lobby
- 3 - 4 private offices
- Modern kitchen/break area
- Workroom / IT
- 10 Workstations

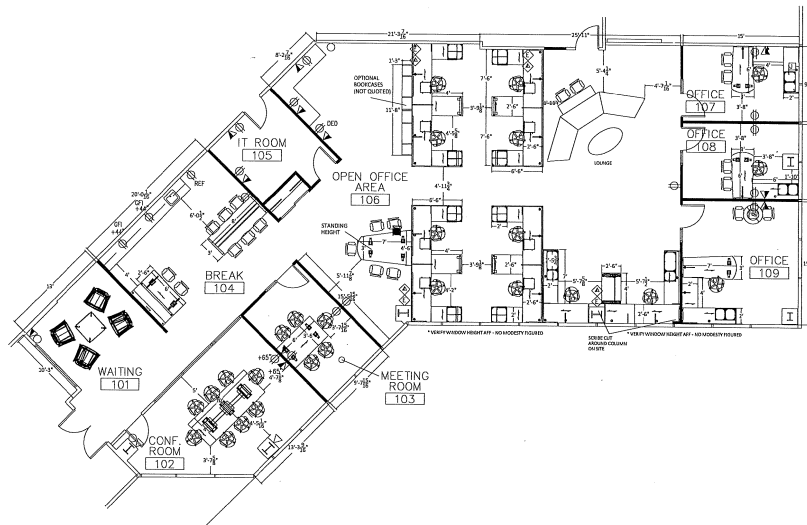
FIRST FLOOR PLAN



DETAILS

Square Feet: 4,099 S.F.
Net Rent: \$13.75/S.F.
OP. Expense: \$8.04/S.F.
Tax: \$2.93/S.F.
Gross Rent: \$25.55/S.F.

SPACE PLAN



HAMILTON PARTNERS - Sponsoring Broker

David Andrews

✉ da@hpre.com

C 6303270566

Philip Sheridan

✉ phil_sheridan@hpre.com

P 6307195567

C 6303032108