

**1001 Warrenville Road**  
*Suite 110*  
1001 Warrenville Road, Lisle, IL 60532

# HAMILTON PARTNERS

www.hamiltonpartners.com



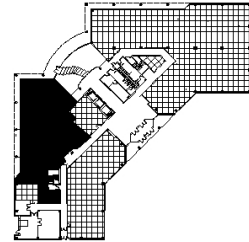
## DETAILS

**Square Feet:** 5,211 S.F.  
**Net Rent:** \$13.75/S.F.  
**OP. Expense:** \$8.04/S.F.  
**Tax:** \$2.93/S.F.  
**Gross Rent:** \$25.55/S.F.

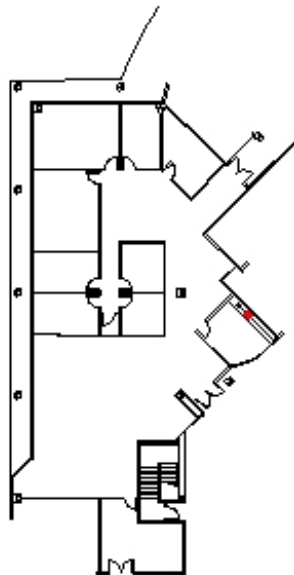
## SUITE FEATURES

- Strong Lobby presence
- 10 ft. floor to ceiling windows!
- Overlooks pond and landscaping
- 6 private offices
- Conference Room
- Break room
- Large open area for workstations
- Workroom/storage adjacent to loading dock

## FIRST FLOOR PLAN



## SPACE PLAN



## HAMILTON PARTNERS - Sponsoring Broker

**David Andrews**

☐ [da@hpre.com](mailto:da@hpre.com)

C 6303270566

**Philip Sheridan**

☐ [phil\\_sheridan@hpre.com](mailto:phil_sheridan@hpre.com)

P 6307195567

C 6303032108

**Paul O'Connor**

☐ [poconnor@hamiltonpartners.com](mailto:poconnor@hamiltonpartners.com)

C 6309210142