

901 Warrenville Road
Suite 400
901 Warrenville Road
Lisle, IL 60532

HAMILTON PARTNERS

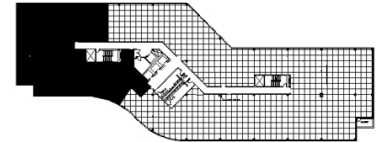
www.hamiltonpartners.com



SUITE FEATURES

- Dramatic views over lakes and beautiful landscaping
- Two kitchens within Premises
- Space has been demolished and is ready for customized office solution

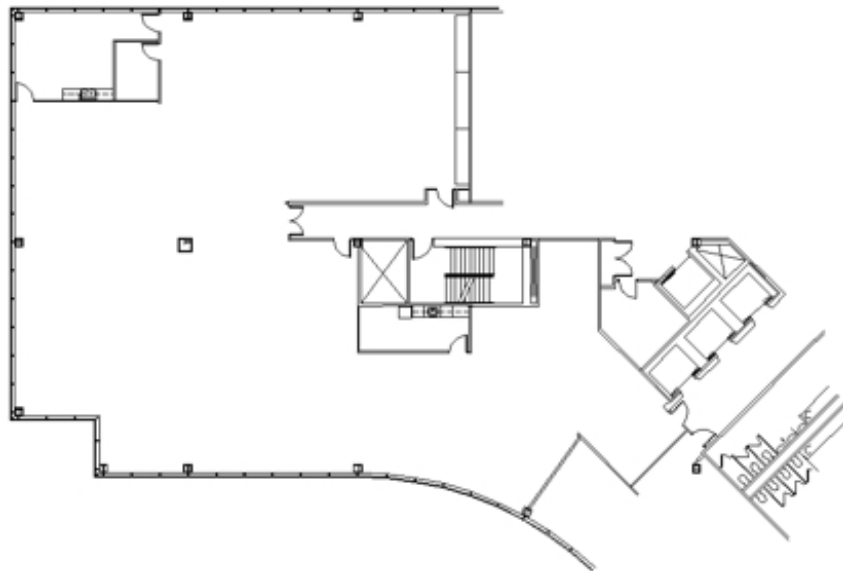
FOURTH FLOOR PLAN



DETAILS

Square Feet: 8,807 S.F.
Net Rent: \$15.75/S.F.
OP. Expense: \$8.17/S.F.
Tax: \$2.64/S.F.
Gross Rent: \$27.67/S.F.

SPACE PLAN



HAMILTON PARTNERS - Sponsoring Broker

David Andrews

☐ da@hpre.com

C 6303270566

Philip Sheridan

☐ phil_sheridan@hpre.com

P 6307195567

C 6303032108

Paul O'Connor

☐ poconnor@hamiltonpartners.com

C 6309210142