

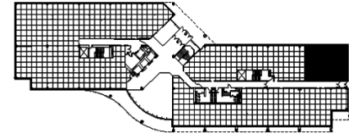
901 Warrenville Road
Suite 120
901 Warrenville Road
Lisle, IL 60532



SUITE FEATURES

- Beautiful glass entry door
- 2-3 private offices
- Conference room
- Interior workroom
- Immediate access to parking

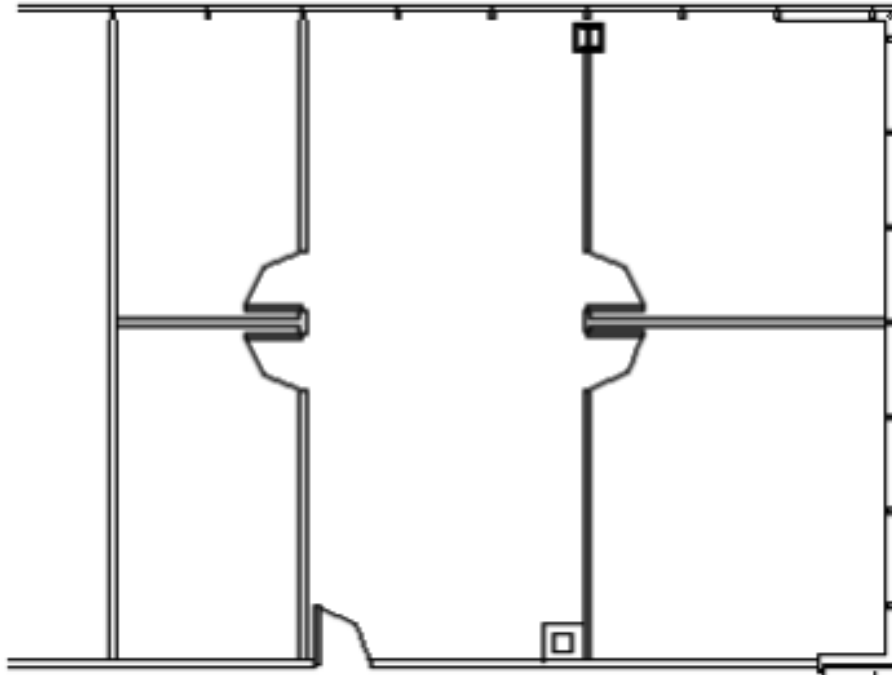
FIRST FLOOR PLAN



DETAILS

Square Feet: 1,639 S.F.
Net Rent: \$15.75/S.F.
OP. Expense: \$8.17/S.F.
Tax: \$2.64/S.F.
Gross Rent: \$27.67/S.F.

SPACE PLAN



HAMILTON PARTNERS - Sponsoring Broker

David Andrews

✉ da@hpre.com

C 6303270566

Philip Sheridan

✉ phil_sheridan@hpre.com

P 6307195567

C 6303032108