

901 Warrenville Road

Suite 15

901 Warrenville Road, Lisle, IL 60532

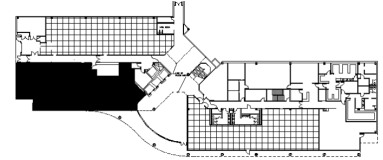
HAMILTON PARTNERS
www.hamiltonpartners.com



SUITE FEATURES

- All offices have glass walls!
- Beautiful views of pond/landscaping
- Front entrance in atrium lobby
- Unparalleled access to amenities and covered parking deck
- 6 private offices
- 1-2 conference rooms
- Large open area for workstations
- Kitchen

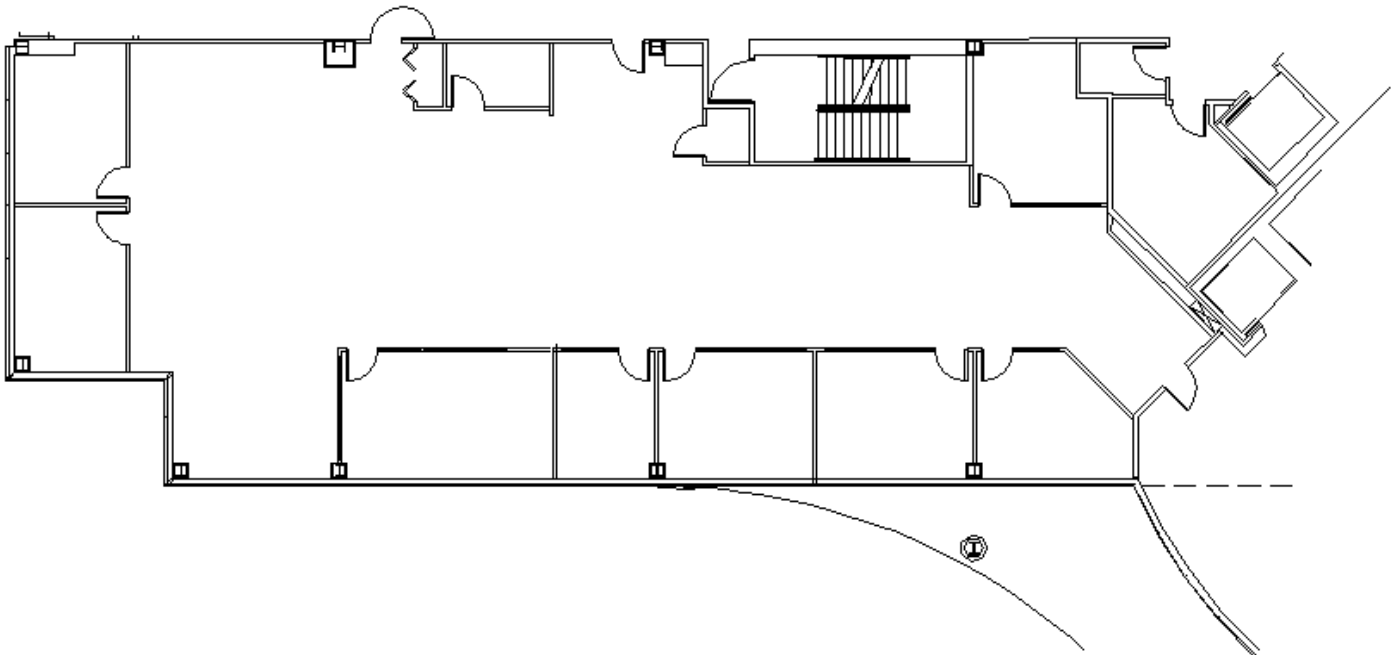
LAKE LEVEL FLOOR PLAN



DETAILS

Square Feet: 4,749 S.F.
Net Rent: \$15.75/S.F.
OP. Expense: \$8.21/S.F.
Tax: \$2.77/S.F.
Gross Rent: \$27.67/S.F.

SPACE PLAN



HAMILTON PARTNERS - Sponsoring Broker

Philip Sheridan

phil_sheridan@hpre.com

P 6307195567

C 6303032108

David Andrews

da@hpre.com

C 6303270566