

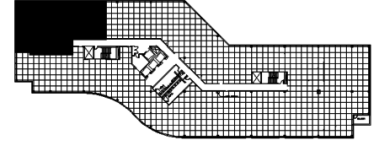
901 Warrenville Road  
Suite 445  
901 Warrenville Road  
Lisle, IL 60532



### SUITE FEATURES

- Dramatic view over beautiful landscaping
- Wide open space plans great for workstations
- Interior workroom
- Nice kitchen
- Can be combined with adjacent space

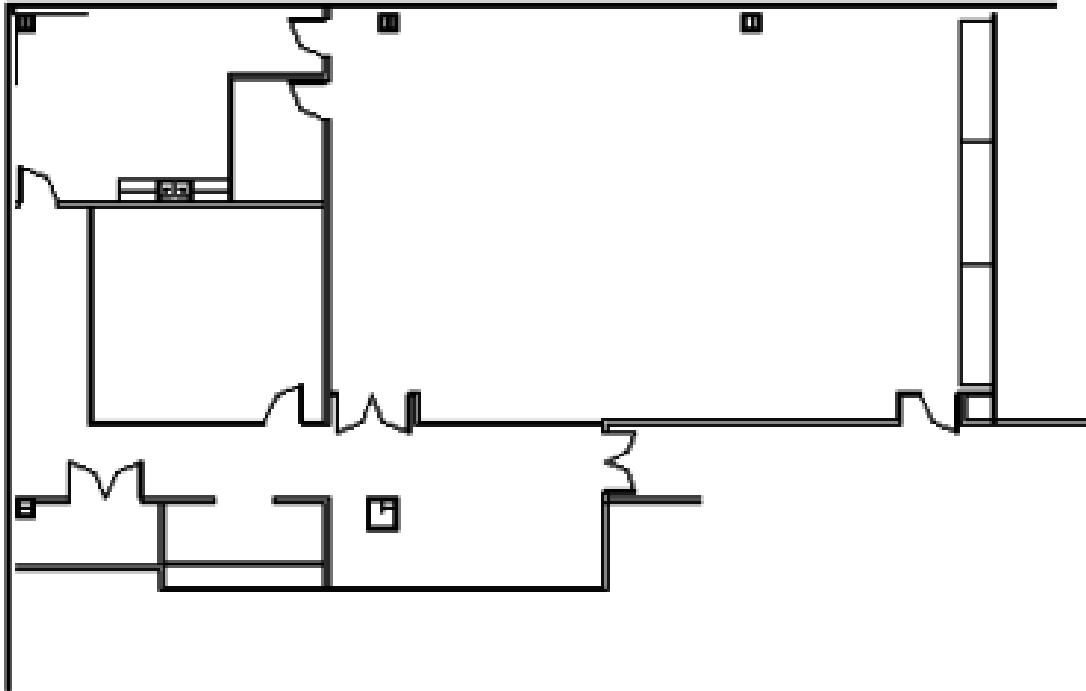
### FOURTH FLOOR PLAN



### DETAILS

**Square Feet:** 4,234 S.F.  
**Net Rent:** \$15.75/S.F.  
**OP. Expense:** \$8.17/S.F.  
**Tax:** \$2.64/S.F.  
**Gross Rent:** \$27.67/S.F.

### SPACE PLAN



### HAMILTON PARTNERS - Sponsoring Broker

**David Andrews**

✉ [da@hpre.com](mailto:da@hpre.com)

C 6303270566

**Philip Sheridan**

✉ [phil\\_sheridan@hpre.com](mailto:phil_sheridan@hpre.com)

P 6307195567  
C 6303032108

**Paul O'Connor**

✉ [poconnor@hamiltonpartners.com](mailto:poconnor@hamiltonpartners.com)

C 6309210142