

901 Warrenville Road  
Suite 450  
901 Warrenville Road  
Lisle, IL 60532

# HAMILTON PARTNERS

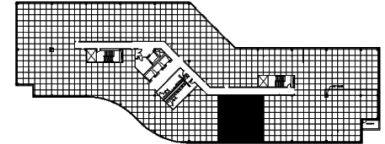
www.hamiltonpartners.com



## SUITE FEATURES

- Customize your new office!
- Wide open space plan
- Beautiful window line with pond/landscaping views

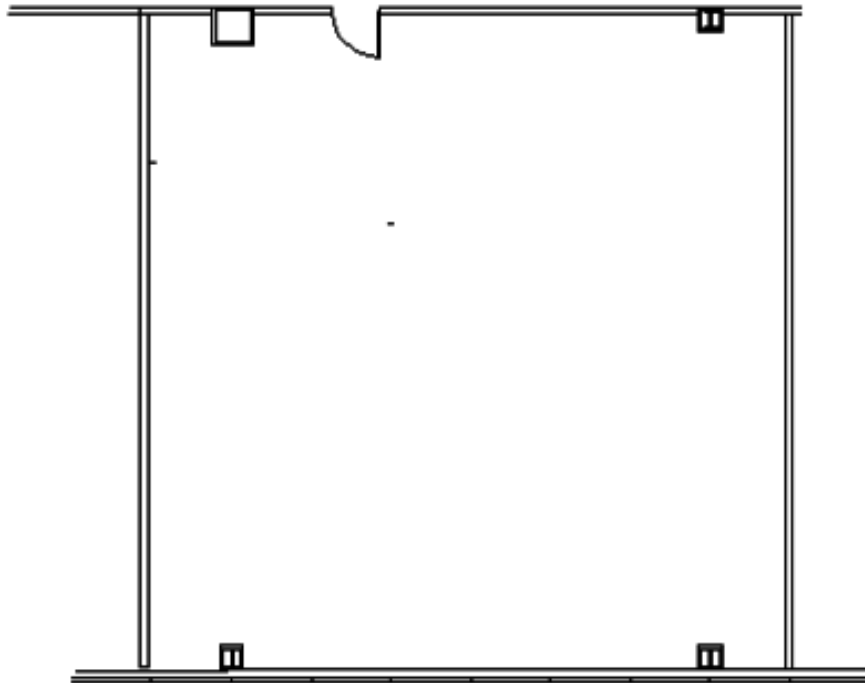
## FOURTH FLOOR PLAN



## DETAILS

**Square Feet:** 2,051 S.F.  
**Net Rent:** \$15.75/S.F.  
**OP. Expense:** \$8.21/S.F.  
**Tax:** \$2.77/S.F.  
**Gross Rent:** \$27.67/S.F.

## SPACE PLAN



## HAMILTON PARTNERS - Sponsoring Broker

### David Andrews

[✉ da@hpre.com](mailto:da@hpre.com)

C 6303270566

### Philip Sheridan

[✉ phil\\_sheridan@hpre.com](mailto:phil_sheridan@hpre.com)

P 6307195567

C 6303032108

### Paul O'Connor

[✉ poconnor@hamiltonpartners.com](mailto:poconnor@hamiltonpartners.com)

P 630-250-4876

F 630-251-8521