

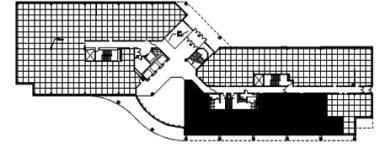
901 Warrenville Road
Suite 103
901 Warrenville Road
Lisle, IL 60532



SUITE FEATURES

- Gorgeous second floor views of pond and landscaping
- Unique 10 feet floor to ceiling windows!
- Glass door entry in building lobby
- Three executive sized private offices
- Four associate offices
- Incredible open area that provides flexible layout for workstations
- Kitchen
- Conference center, health club, and deli in building
- Covered parking

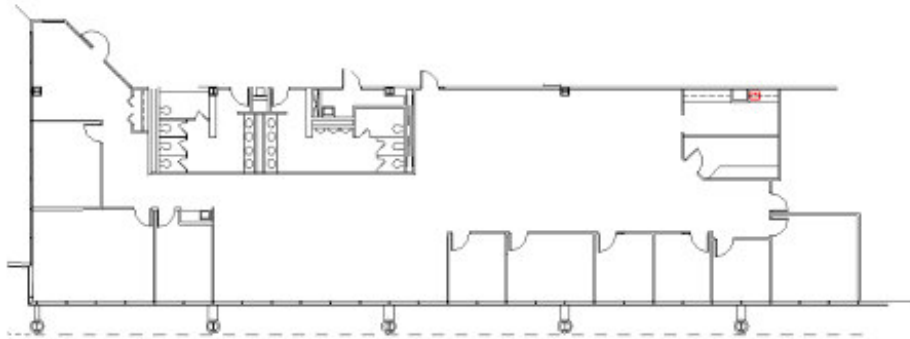
FIRST FLOOR PLAN



DETAILS

Square Feet: 5,091 S.F.
Net Rent: \$15.75/S.F.
OP. Expense: \$8.17/S.F.
Tax: \$2.62/S.F.
Gross Rent: \$27.67/S.F.

SPACE PLAN



HAMILTON PARTNERS - Sponsoring Broker

David Andrews

da@hpre.com

C 6303270566

Philip Sheridan

phil_sheridan@hpre.com

P 6307195567

C 6303032108