

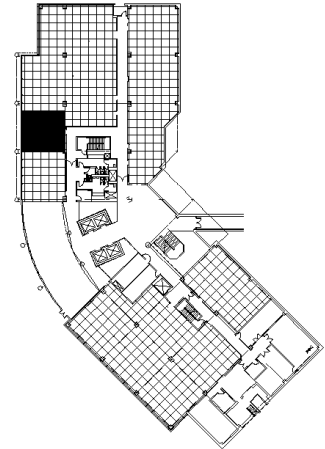
801 Warrenville Road
Suite 65
801 Warrenville Rd, Lisle, IL 60532



SUITE FEATURES

- 10 ft floor to ceiling windows!
- Beautiful views of landscaped pond
- 2 Offices
- Nice open space for workstations
- Storage/Telecom room

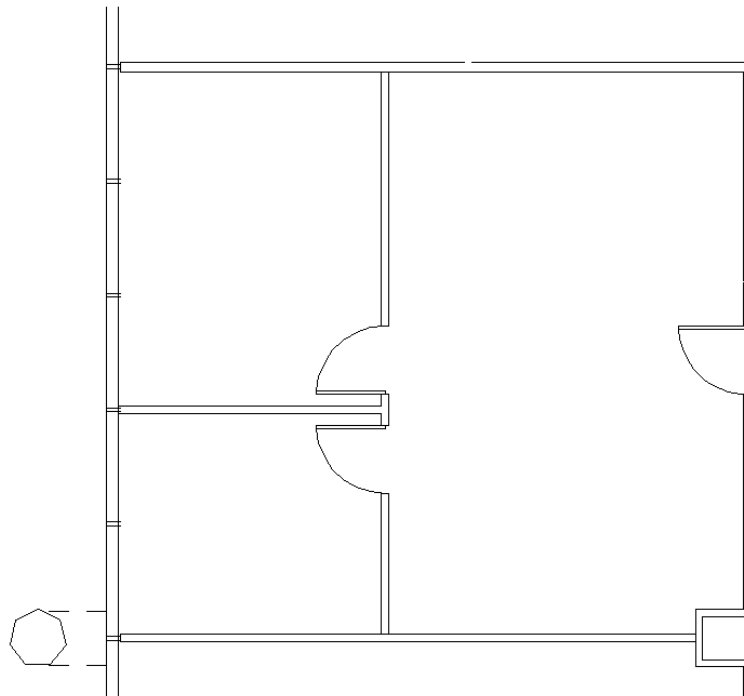
Lake Level FLOOR PLAN



DETAILS

Square Feet: 773 S.F.
Net Rent: \$14.50/S.F.
OP. Expense: \$8.70/S.F.
Tax: \$2.49/S.F.
Gross Rent: \$26.35/S.F.

SPACE PLAN



HAMILTON PARTNERS - Sponsoring Broker

Philip Sheridan
phil_sheridan@hpre.com
P 6307195567
C 6303032108

David Andrews
da@hpre.com
C 6303270566