

801 Warrenville Road

Suite 655

801 Warrenville Road, Lisle, IL 60532

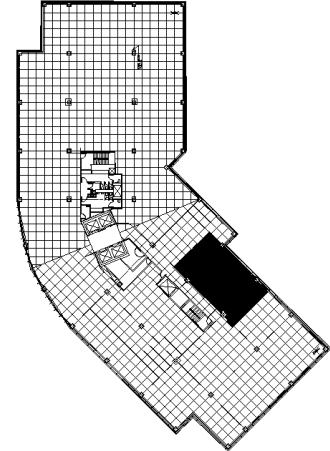
HAMILTON PARTNERS
www.hamiltonpartners.com



SUITE FEATURES

- Beautiful small office with incredible windowline
- 3 offices
- Large open area for workstations
- Efficient layout
- Can be combined for 3,673 RSF suite

SIXTH FLOOR PLAN



DETAILS

Square Feet: 2,028 S.F.

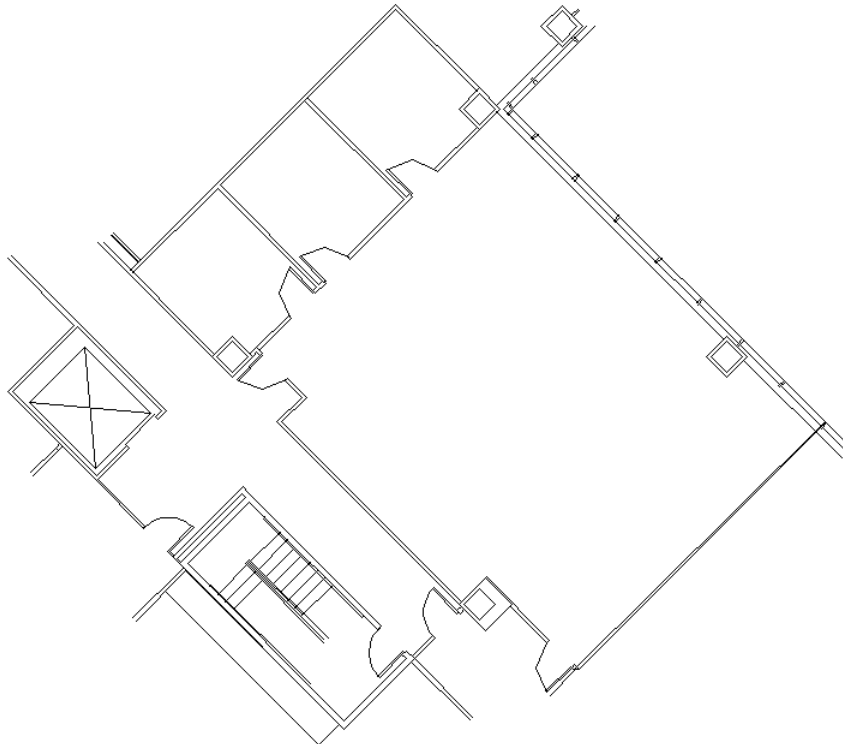
Net Rent: \$14.50/S.F.

OP. Expense: \$9.22/S.F.

Tax: \$2.63/S.F.

Gross Rent: \$26.35/S.F.

SPACE PLAN



HAMILTON PARTNERS - Sponsoring Broker

David Andrews

da@hpre.com

C 6303270566

Philip Sheridan

phil_sheridan@hpre.com

P 6307195567

C 6303032108