

801 Warrenville Road

Suite 350

801 Warrenville Rd, Lisle, IL 60532

[Click for Virtual Tour](#)

HAMILTON PARTNERS
www.hamiltonpartners.com



DETAILS

Square Feet: 9,882 S.F.

Net Rent: \$14.50/S.F.

OP. Expense: \$9.22/S.F.

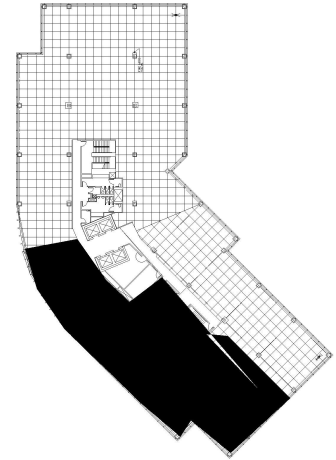
Tax: \$2.63/S.F.

Gross Rent: \$26.35/S.F.

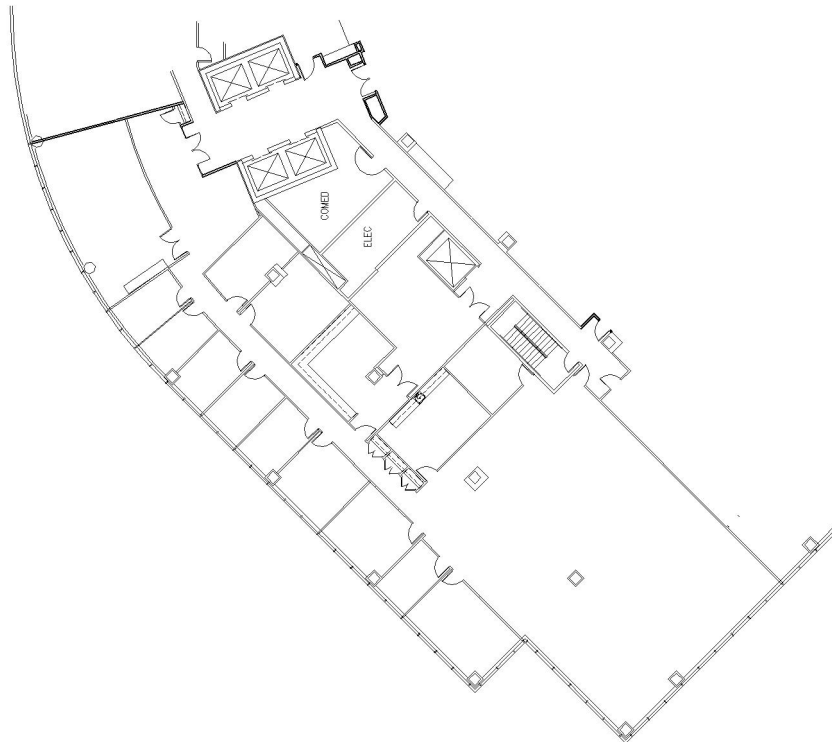
SUITE FEATURES

- Click here for virtual tour
- Efficient layout with Glass Reception in Elevator Lobby
- West views of signature landscaping/lake
- Large conference room
- Small meeting room
- 10 Private offices
- Eat-in kitchen
- Mail Room/Product Storage Area
- Large open area perfect for workstations

THIRD FLOOR PLAN



SPACE PLAN



HAMILTON PARTNERS - Sponsoring Broker

Philip Sheridan

phil_sheridan@hpre.com

P 6307195567

C 6303032108

David Andrews

da@hpre.com

C 6303270566