

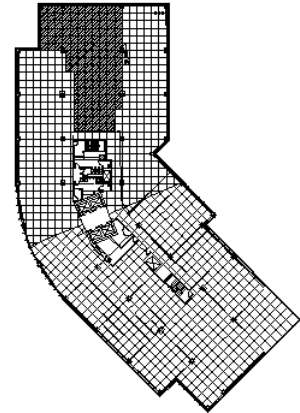
801 Warrenville Road
Suite 620
801 Warrenville Road
Lisle, IL 60532



SUITE FEATURES

- Glass entrance
- Break room and conference room in reception
- 3rd perimeter private offices
- Storage/IT closet
- Wide open space ready for customization

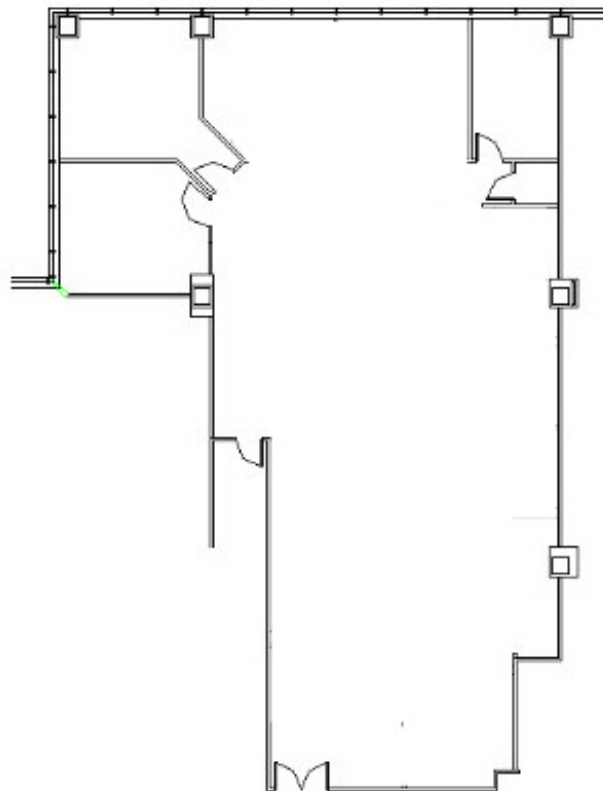
SIXTH FLOOR PLAN



DETAILS

Square Feet: 4,388 S.F.
Net Rent: \$15.00/S.F.
OP. Expense: \$8.30/S.F.
Tax: \$2.84/S.F.
Gross Rent: \$26.14/S.F.

SPACE PLAN



HAMILTON PARTNERS - Sponsoring Broker

David Andrews

✉ da@hpre.com

P 630-719-5565

F 630-719-5570

Philip Sheridan

✉ phil_sheridan@hpre.com

P 630-719-5567

F 630-719-5570