

801 Warrenville Road

Suite 50

801 Warrenville Rd, Lisle, IL 60532

[Click for Virtual Tour](#)

HAMILTON PARTNERS  
www.hamiltonpartners.com



### DETAILS

**Square Feet:** 4,516 S.F.  
**Net Rent:** \$14.50/S.F.  
**OP. Expense:** \$9.22/S.F.  
**Tax:** \$2.63/S.F.  
**Gross Rent:** \$26.35/S.F.

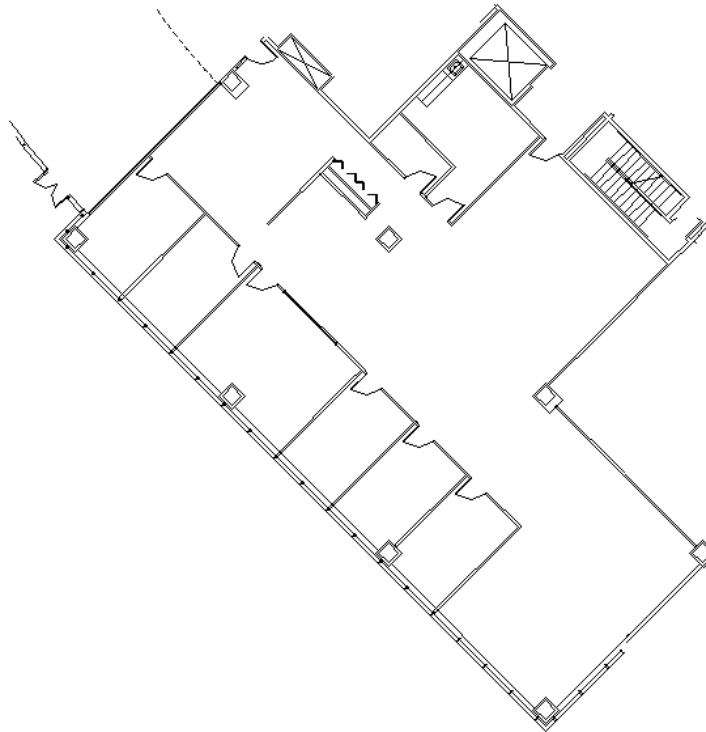
### SUITE FEATURES

- [Click here for Virtual tour](#)
- Ideally located suite with entrance in building atrium and views of lakes/landscaping
- 5 private offices
- Glass walled conference room
- Eat-in kitchen
- Nice open area for workstations

### LAKE LEVEL FLOOR PLAN



### SPACE PLAN



### HAMILTON PARTNERS - Sponsoring Broker

**David Andrews**

[da@hpre.com](mailto:da@hpre.com)

C 6303270566

**Philip Sheridan**

[phil\\_sheridan@hpre.com](mailto:phil_sheridan@hpre.com)

P 6307195567

C 6303032108