

801 Warrenville Road

Suite 625

801 Warrenville Road, Lisle, IL 60532

HAMILTON  
www.hamiltonpartners.com PARTNERS



## DETAILS

**Square Feet:** 6,770 S.F.

**Net Rent:** \$14.50/S.F.

**OP. Expense:** \$9.22/S.F.

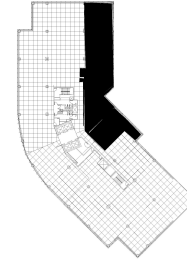
**Tax:** \$2.63/S.F.

**Gross Rent:** \$26.35/S.F.

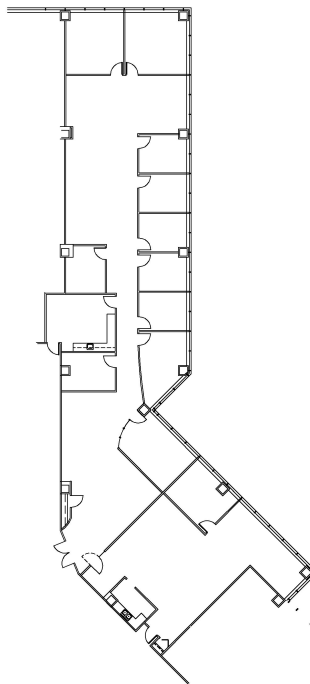
## SUITE FEATURES

- Elevator lobby exposure
- Beautiful Arboretum views
- Glass entry
- Conference room
- Kitchen
- Covered walkway connection to a deli and a health club
- Underground tunnel connection to a parking garage
- 9 window private offices

## SIXTH FLOOR PLAN



## SPACE PLAN



## HAMILTON PARTNERS - Sponsoring Broker

**Philip Sheridan**

☐ [phil\\_sheridan@hpre.com](mailto:phil_sheridan@hpre.com)

P 6307195567

C 6303032108

**David Andrews**

☐ [da@hpre.com](mailto:da@hpre.com)

C 6303270566