

801 Warrenville Road

Suite 245

801 Warrenville Rd, Lisle, IL 60532

HAMILTON PARTNERS

www.hamiltonpartners.com



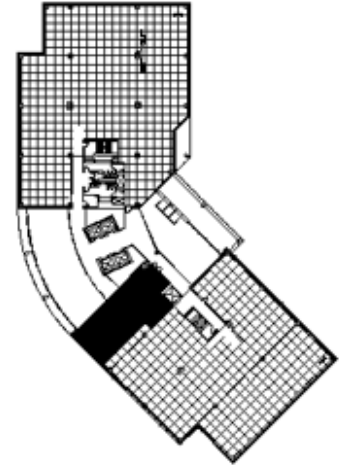
DETAILS

Square Feet: 2,014 S.F.
Net Rent: \$14.50/S.F.
OP. Expense: \$9.22/S.F.
Tax: \$2.63/S.F.
Gross Rent: \$26.35/S.F.

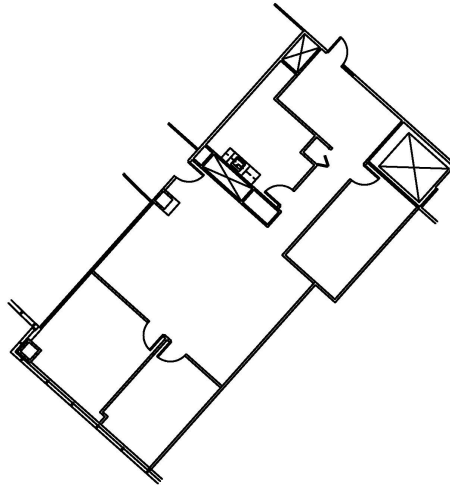
SUITE FEATURES

- Beautiful corner space with views of pond and atrium
- 2 Private offices
- Open area with natural light
- Conference room
- Kitchen area

SECOND FLOOR PLAN



SPACE PLAN



HAMILTON PARTNERS - Sponsoring Broker

Gary Mori

[✉ gary_mori@hpre.com](mailto:gary_mori@hpre.com)

P 630-719-5560

F 630-719-5570

Philip Sheridan

[✉ phil_sheridan@hpre.com](mailto:phil_sheridan@hpre.com)

P 6307195567

C 6303032108

David Andrews

[✉ da@hpre.com](mailto:da@hpre.com)

C 6303270566