

801 Warrenville Road

Suite 800

801 Warrenville Rd, Lisle, IL 60532

[Click for Virtual Tour](#)

HAMILTON PARTNERS
www.hamiltonpartners.com



DETAILS

Square Feet: 29,842 S.F.

Net Rent: \$14.50/S.F.

OP. Expense: \$9.22/S.F.

Tax: \$2.63/S.F.

Gross Rent: \$26.35/S.F.

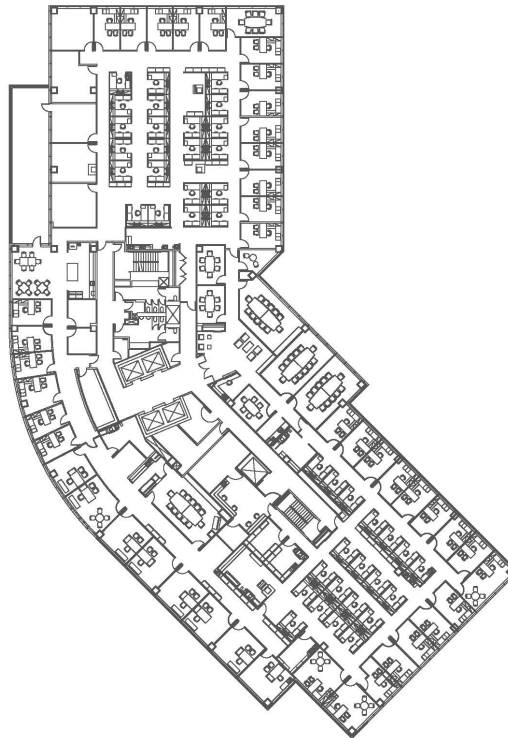
SUITE FEATURES

- Click here for virtual tour
- Modern office space with Scandinavian design
- Top floor of the building
- Glass entry with full glass conference room
- Secured executive area
- Private outdoor patio connected to full kitchen
- Perfect mix of offices and open area for workstations
- Completely furnished and wired space
- Includes 46 workstations

EIGHTH FLOOR PLAN



SPACE PLAN



HAMILTON PARTNERS - Sponsoring Broker

Philip Sheridan

phil_sheridan@hpre.com

P 6307195567

C 6303032108

David Andrews

da@hpre.com

C 6303270566