

801 Warrenville Road

Suite 50

801 Warrenville Rd, Lisle, IL 60532

HAMILTON PARTNERS

www.hamiltonpartners.com



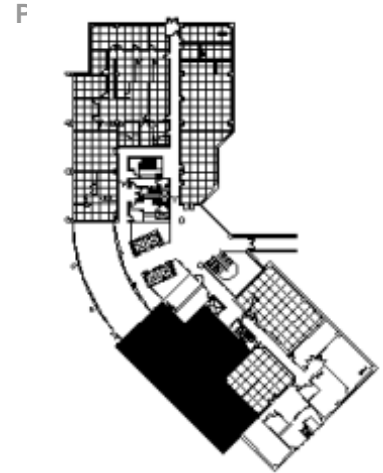
DETAILS

Square Feet: 4,516 S.F.
Net Rent: \$14.50/S.F.
OP. Expense: \$7.94/S.F.
Tax: \$2.84/S.F.
Gross Rent: \$26.35/S.F.

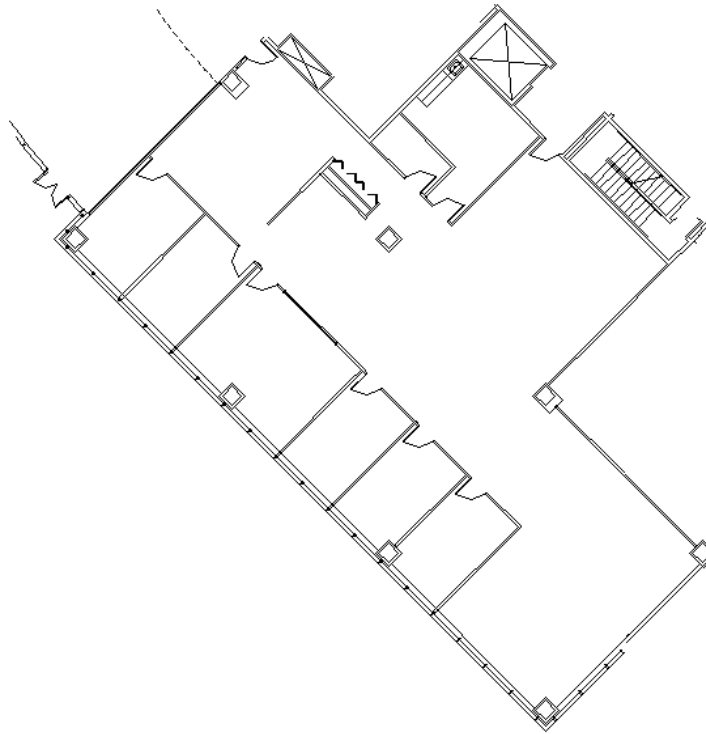
SUITE FEATURES

- Beautiful atrium exposure with desirable pond views
- Glass conference room
- Breakroom with kitchen
- 5 Perimeter private offices
- 105 feet of lineal glass line
- Glass entry
- Perfect for services firm

LOWER LEVEL FLOOR



SPACE PLAN



HAMILTON PARTNERS - Sponsoring Broker

David Andrews

✉ da@hpre.com

C 6303270566

Philip Sheridan

✉ phil_sheridan@hpre.com

P 6307195567

C 6303032108

Paul O'Connor

✉ poconnor@hamiltonpartners.com

C 6309210142