

801 Warrenville Road

Suite 550

801 Warrenville Road, Lisle, IL 60532

HAMILTON PARTNERS  
www.hamiltonpartners.com



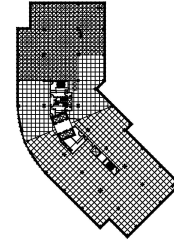
## DETAILS

**Square Feet:** 9,661 S.F.  
**Net Rent:** \$14.50/S.F.  
**OP. Expense:** \$9.22/S.F.  
**Tax:** \$2.63/S.F.  
**Gross Rent:** \$26.35/S.F.

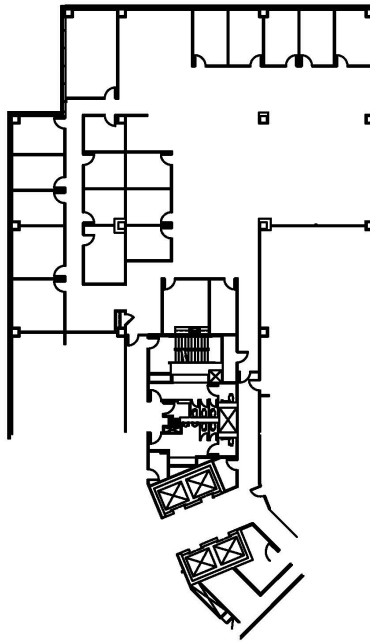
## SUITE FEATURES

- Glass Reception off Elevator Lobby!
- 15 private offices along windowline
- Multiple conference rooms
- Ample open area for workstations
- Kitchen area
- Beautiful views of the pond

## FIFTH FLOOR PLAN



## SPACE PLAN



HAMILTON PARTNERS - Sponsoring Broker

**Philip Sheridan**

[phil\\_sheridan@hpre.com](mailto:phil_sheridan@hpre.com)

P 6307195567

C 6303032108