

801 Warrenville Road  
Suite 100  
801 Warrenville Rd  
Lisle, IL 60532



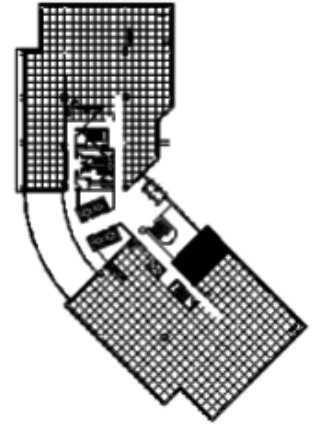
### DETAILS

**Square Feet:** 841 S.F.  
**Net Rent:** \$14.50/S.F.  
**OP. Expense:** \$7.96/S.F.  
**Tax:** \$2.77/S.F.  
**Gross Rent:** \$26.35/S.F.

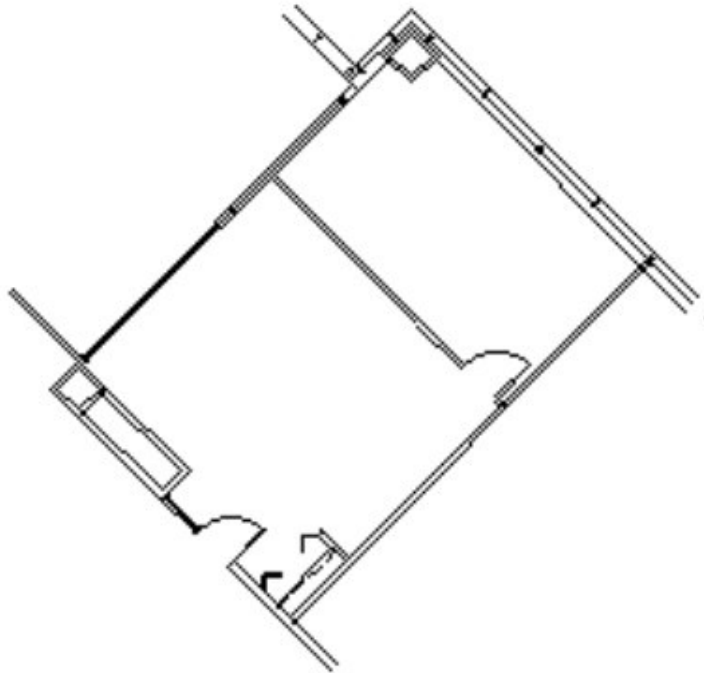
### SUITE FEATURES

- Lobby exposure!
- Corner space with large amount of windowline
- Great identity from building entrance
- One large office
- Conference facility in building
- Covered parking
- Beautiful wooded setting

### FIRST FLOOR PLAN



### SPACE PLAN



### HAMILTON PARTNERS - Sponsoring Broker

#### David Andrews

✉ [da@hpre.com](mailto:da@hpre.com)

C 6303270566

#### Philip Sheridan

✉ [phil\\_sheridan@hpre.com](mailto:phil_sheridan@hpre.com)

P 6307195567

C 6303032108