

801 Warrenville Road

Suite 605

801 Warrenville Road, Lisle, IL 60532

[Click for Virtual Tour](#)

HAMILTON  
www.hamiltonpartners.com PARTNERS



## DETAILS

**Square Feet:** 4,832 S.F.

**Net Rent:** \$14.50/S.F.

**OP. Expense:** \$9.22/S.F.

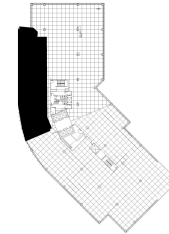
**Tax:** \$2.63/S.F.

**Gross Rent:** \$26.35/S.F.

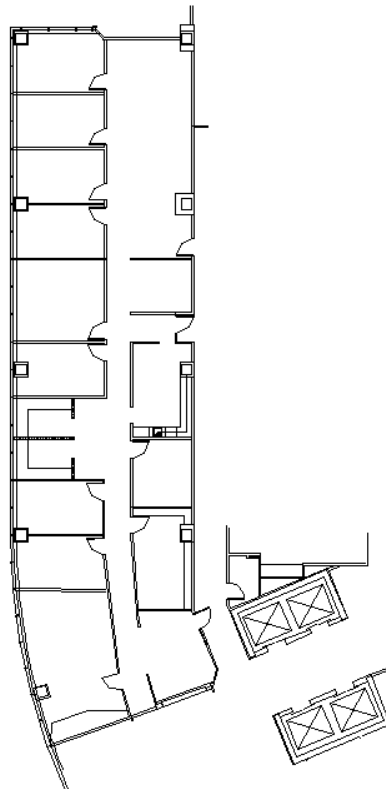
## SUITE FEATURES

- [Click here for Virtual Tour](#)
- Glass entry at elevator lobby
- Beautiful pond views
- Efficient layout
- 8 private offices
- Well appointed conference Room
- Storage room/IT room
- Work/copy area
- Kitchen

## SIXTH FLOOR PLAN



## SPACE PLAN



HAMILTON PARTNERS - Sponsoring Broker

**David Andrews**

☐ [da@hpre.com](mailto:da@hpre.com)

C 6303270566

**Philip Sheridan**

☐ [phil\\_sheridan@hpre.com](mailto:phil_sheridan@hpre.com)

P 6307195567

C 6303032108