

801 Warrenville Road

Suite 555

801 Warrenville Road, Lisle, IL 60532

[Click for Virtual Tour](#)

HAMILTON PARTNERS
www.hamiltonpartners.com



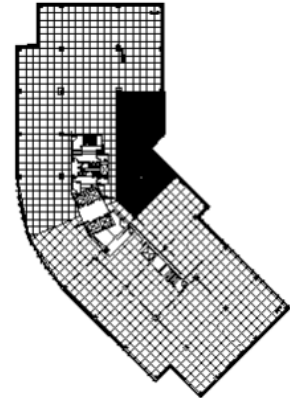
DETAILS

Square Feet: 3,107 S.F.
Net Rent: \$14.50/S.F.
OP. Expense: \$9.22/S.F.
Tax: \$2.63/S.F.
Gross Rent: \$26.35/S.F.

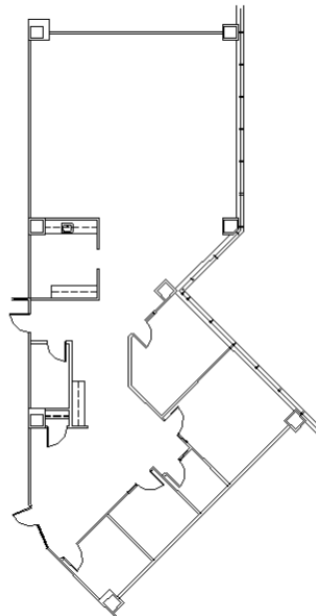
SUITE FEATURES

- [Click here for Virtual Tour](#)
- Double glass entry in Elevator Lobby!
- 2 private offices along windowline
- Large conference room (can be 3 offices)
- Open space for workstations
- Kitchen area
- IT/storage

FIFTH FLOOR PLAN



SPACE PLAN



HAMILTON PARTNERS - Sponsoring Broker

David Andrews

da@hpre.com

C 6303270566

Philip Sheridan

phil_sheridan@hpre.com

P 6307195567

C 6303032108