

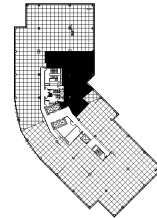
801 Warrenville Road
Suite 301
801 Warrenville Road
Lisle, IL 60532



SUITE FEATURES

- Virtual Tour Here
- Elevator Lobby identity and reception with wood flooring
- Space has been whiteboxed
- Great natural light
- Eastern views

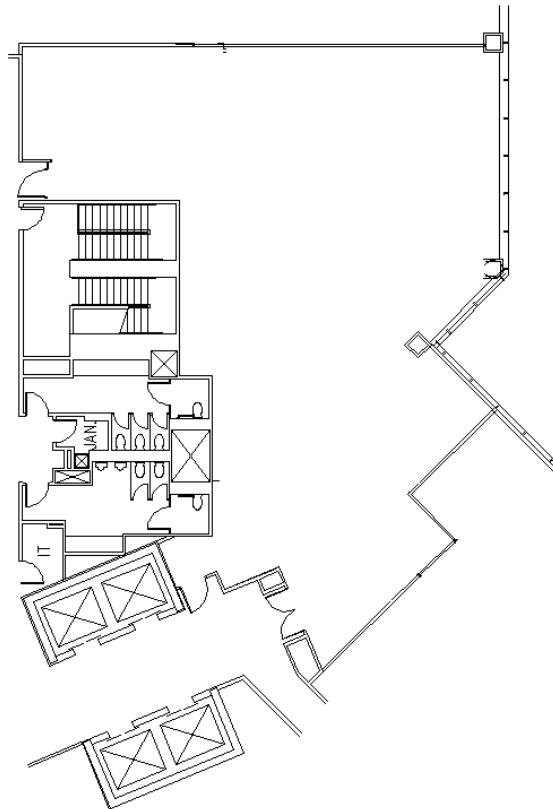
THIRD FLOOR PLAN



DETAILS

Square Feet: 3,941 S.F.
Net Rent: \$15.00/S.F.
OP. Expense: \$8.30/S.F.
Tax: \$2.84/S.F.
Gross Rent: \$26.14/S.F.

SPACE PLAN



CONTACT INFORMATION

David Andrews

✉ da@hpre.com

P 630-719-5565
F 630-719-5570

Philip Sheridan

✉ phil_sheridan@hpre.com

P 630-719-5567
F 630-719-5570