

801 Warrenville Road

Suite 750

801 Warrenville Road, Lisle, IL 60532

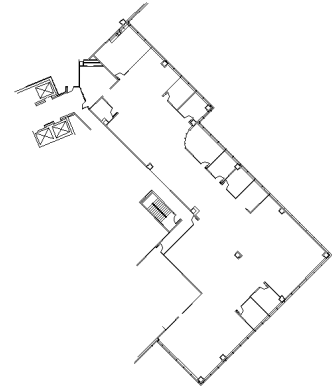
HAMILTON PARTNERS  
www.hamiltonpartners.com



### SUITE FEATURES

- Beautiful glass entry in elevator lobby
- Contemporary finishes throughout
- 8 perimeter private offices
- 2 conference rooms existing
- Efficient layout

### SEVENTH FLOOR PLAN

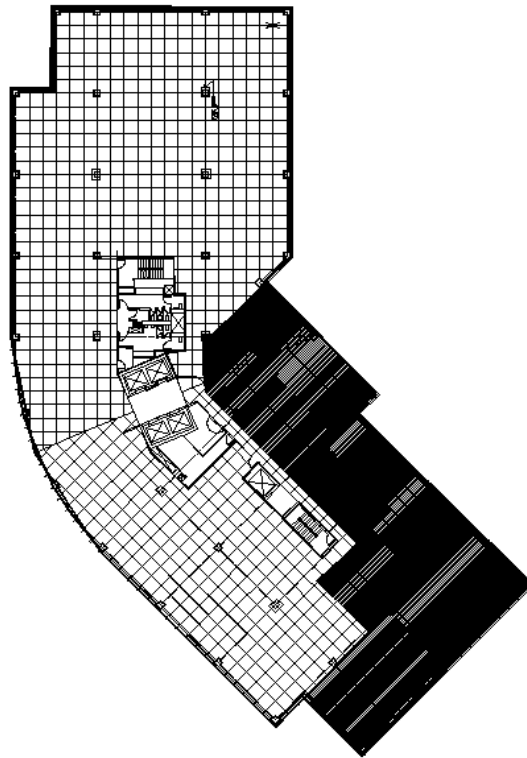


### DETAILS

**Square Feet:** 9,562 S.F.  
**Net Rent:** \$14.50/S.F.  
**OP. Expense:** \$7.94/S.F.  
**Tax:** \$2.84/S.F.  
**Gross Rent:** \$26.35/S.F.

Â

### SPACE PLAN



HAMILTON PARTNERS - Sponsoring Broker

**Philip Sheridan**

✉ [phil\\_sheridan@hpre.com](mailto:phil_sheridan@hpre.com)

P 6307195567

C 6303032108