

1011 Warrenville Road

Suite 325

1011 Warrenville Road, Lisle, IL 60532

HAMILTON PARTNERS
www.hamiltonpartners.com



DETAILS

Square Feet: 6,817 S.F.

Net Rent: \$15.75/S.F.

OP. Expense: \$8.72/S.F.

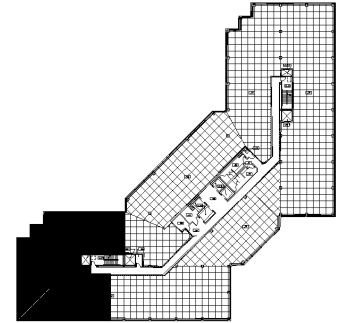
Tax: \$3.00/S.F.

Gross Rent: \$28.08/S.F.

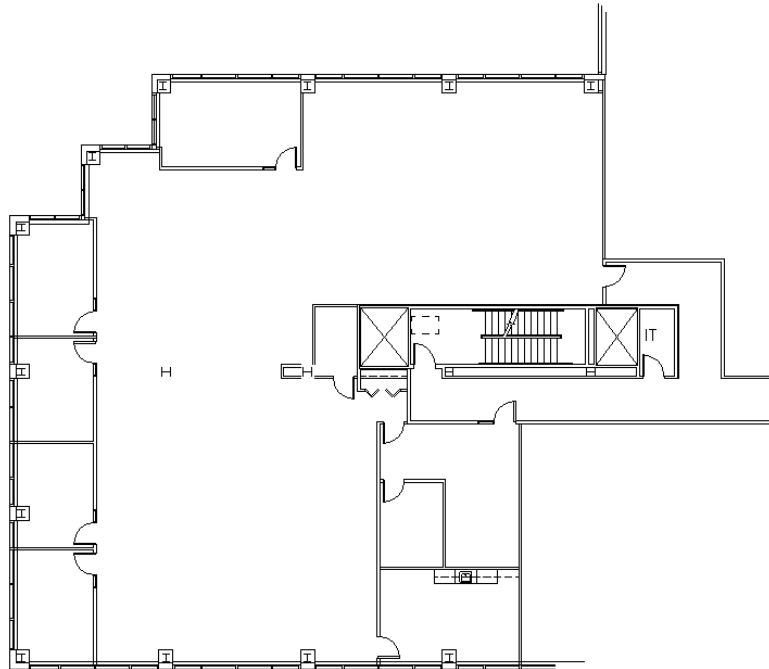
SUITE FEATURES

- Beautiful recently built suite
- wide open space plans well for workstations
- Natural light floods the space with windows on 3 sides
- Kitchen/breakroom
- Reception area with glass door entry

THIRD FLOOR PLAN



SPACE PLAN



HAMILTON PARTNERS - Sponsoring Broker

David Andrews

da@hpre.com

C 6303270566

Philip Sheridan

phil_sheridan@hpre.com

P 6307195567

C 6303032108