

1011 Warrenville Road

Suite 110

1011 Warrenville Road, Lisle, IL 60532

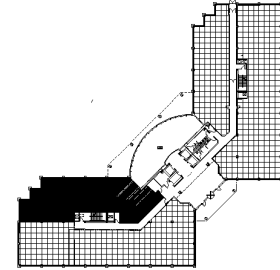
HAMILTON PARTNERS
www.hamiltonpartners.com



SUITE FEATURES

- Strong lobby presence
- Views of Pond, landscaping and atrium
- Glass entry with reception
- Three private offices
- Conference Room
- Kitchen and IT/Workroom

FIRST FLOOR PLAN



DETAILS

Square Feet: 4,790 S.F.

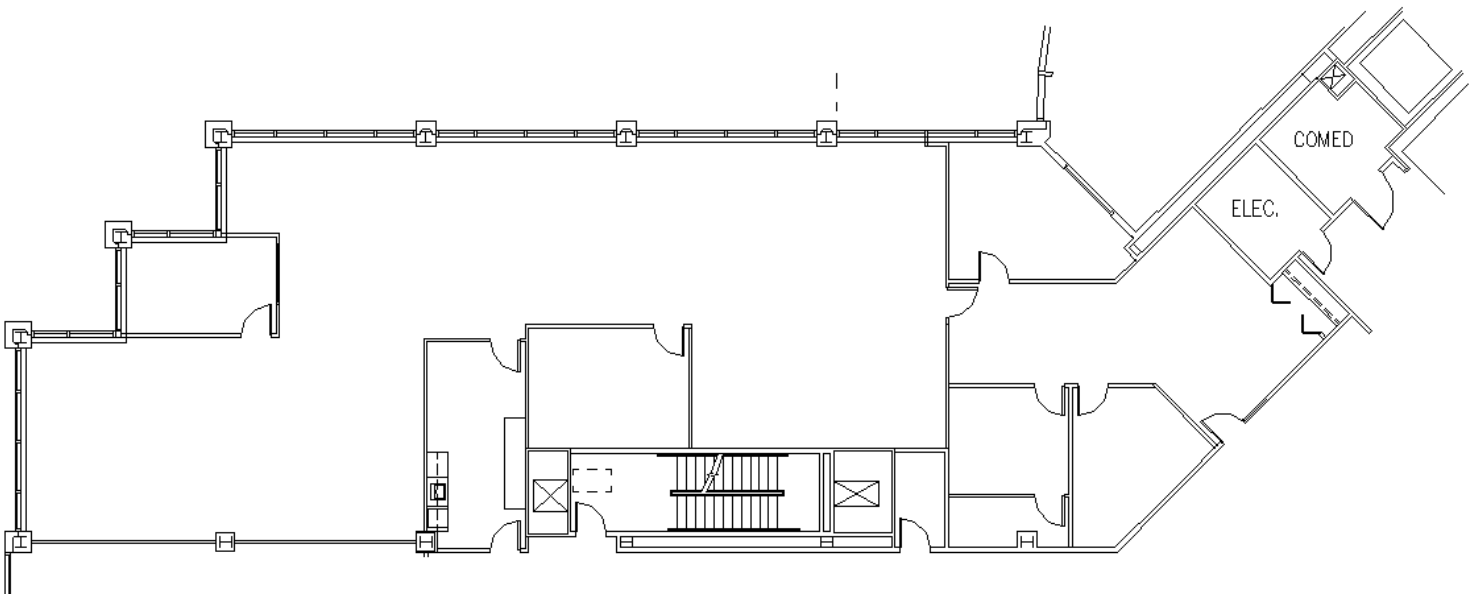
Net Rent: \$15.75/S.F.

OP. Expense: \$8.06/S.F.

Tax: \$2.91/S.F.

Gross Rent: \$28.08/S.F.

SPACE PLAN



HAMILTON PARTNERS - Sponsoring Broker

David Andrews

✉ da@hpre.com

C 6303270566

Philip Sheridan

✉ phil_sheridan@hpre.com

P 6307195567

C 6303032108