

1011 Warrenville Road

Suite 210

1011 Warrenville Road, Lisle, IL 60532

HAMILTON PARTNERS

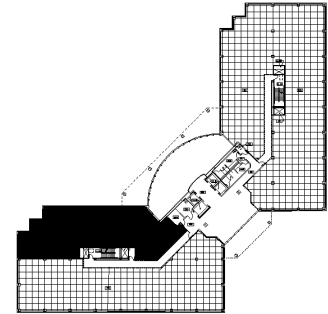
www.hamiltonpartners.com



SUITE FEATURES

- Fully furnished plug& play space!
- Beautiful lake views
- Glass entry reception close to elevator lobby with large boardroom and small meeting room
- Kitchen/Breakroom
- 5Â perimeter private offices
- OpenÂ work areaÂ for storage and copying
- 16 workstations wired and installed in open area
- Space is flooded with natural light

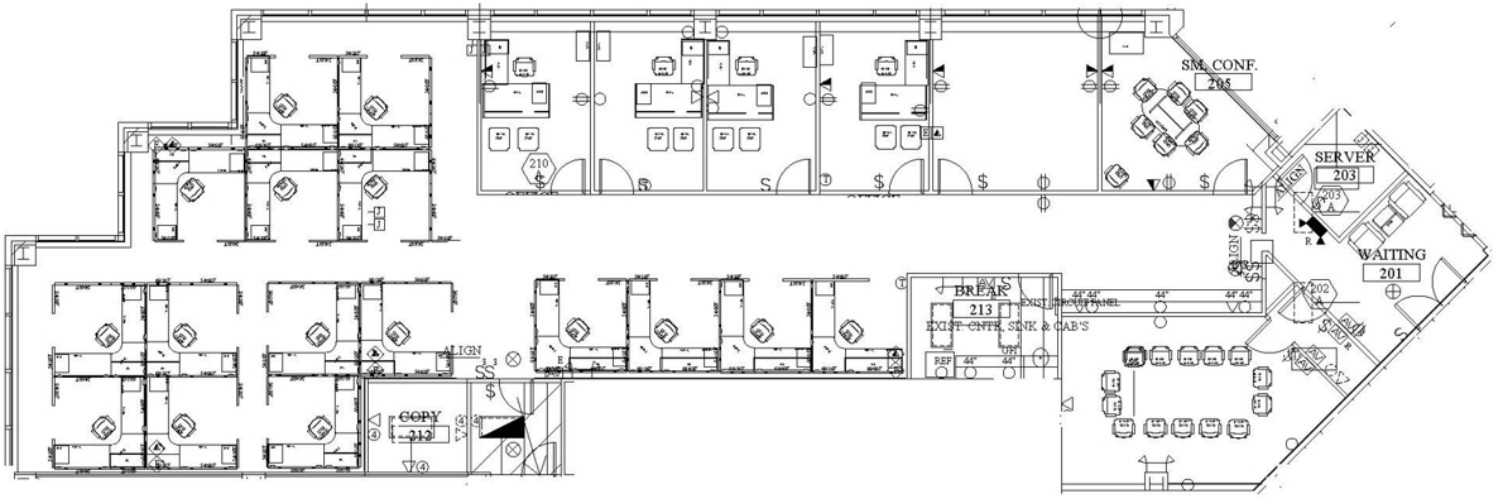
SECOND FLOOR PLAN



DETAILS

Square Feet: 5,169 S.F.
Net Rent: \$15.75/S.F.
OP. Expense: \$7.88/S.F.
Tax: \$2.89/S.F.
Gross Rent: \$28.08/S.F.

SPACE PLAN



HAMILTON PARTNERS - Sponsoring Broker

David Andrews

✉ da@hpre.com

C 6303270566

Philip Sheridan

✉ phil_sheridan@hpre.com

P 6307195567

C 6303032108

Paul O'Connor

✉ poconnor@hamiltonpartners.com

C 6309210142