

1011 Warrenville Road

Suite 115

1101 Warrenville Road, Lisle, IL 6-532

HAMILTON PARTNERS

www.hamiltonpartners.com



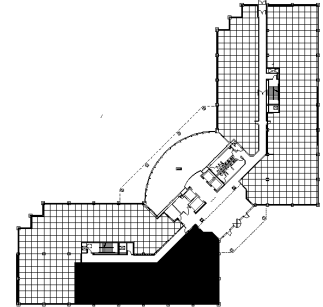
DETAILS

Square Feet: 5,896 S.F.
Net Rent: \$15.75/S.F.
OP. Expense: \$7.88/S.F.
Tax: \$2.89/S.F.
Gross Rent: \$28.08/S.F.

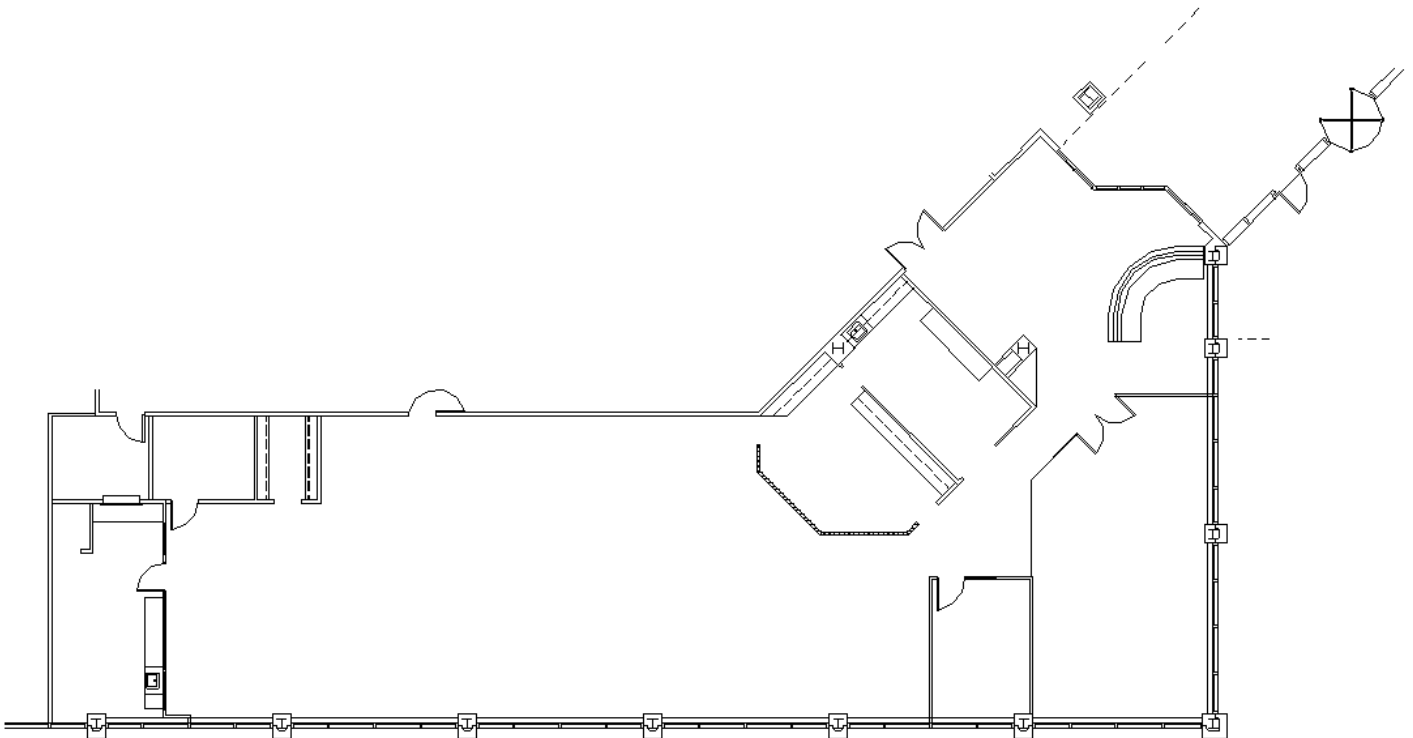
SUITE FEATURES

- Immediately visible from Building entrance
- Space is available 7/1/2017
- Modern finishes and filled with natural light
- large glass boardroom
- Open concept kitchen/work area
- 2 kitchen/sink areas available
- Dedicated IT room

FIRST FLOOR PLAN



SPACE PLAN



HAMILTON PARTNERS - Sponsoring Broker

David Andrews

da@hpre.com

C 6303270566

Philip Sheridan

phil_sheridan@hpre.com

P 6307195567

C 6303032108

Paul O'Connor

poconnor@hamiltonpartners.com

C 6309210142