

1011 Warrenville Road

Suite 160

1011 Warrenville Road, Lisle, IL 60532

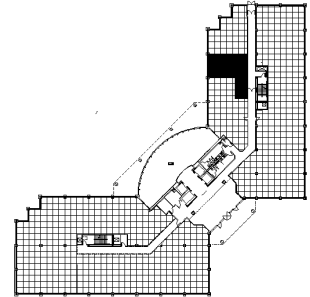
HAMILTON PARTNERS  
www.hamiltonpartners.com



### SUITE FEATURES

- Great space on first floor
- Two private offices
- Pond view!

### FIRST FLOOR PLAN



### DETAILS

**Square Feet:** 966 S.F.

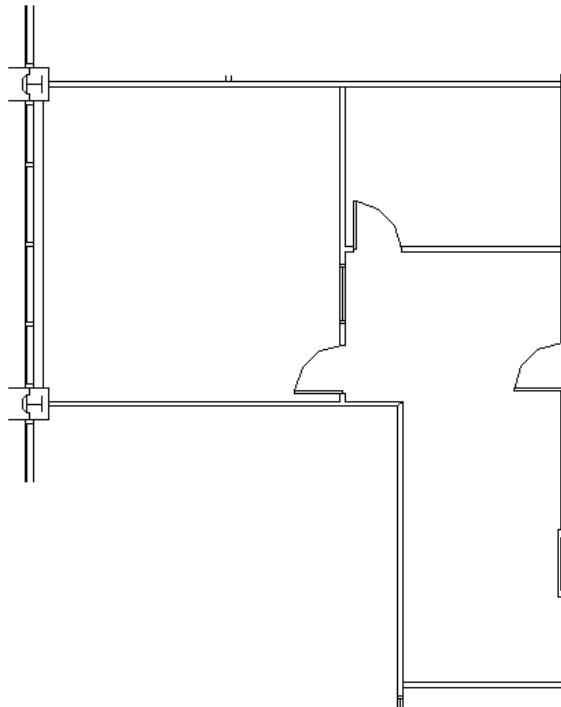
**Net Rent:** \$15.75/S.F.

**OP. Expense:** \$8.06/S.F.

**Tax:** \$3.02/S.F.

**Gross Rent:** \$28.08/S.F.

### SPACE PLAN



### HAMILTON PARTNERS - Sponsoring Broker

**David Andrews**

✉ [da@hpre.com](mailto:da@hpre.com)

C 6303270566

**Philip Sheridan**

✉ [phil\\_sheridan@hpre.com](mailto:phil_sheridan@hpre.com)

P 6307195567

C 6303032108

**Paul O'Connor**

✉ [poconnor@hamiltonpartners.com](mailto:poconnor@hamiltonpartners.com)

C 6309210142