

1011 Warrenville Road

Suite 215

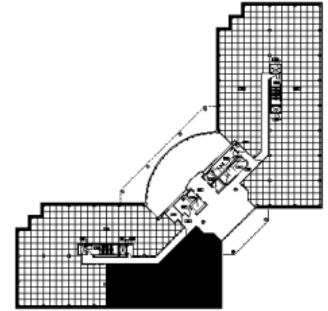
1011 Warrenville Road, Lisle, IL 60532



SUITE FEATURES

- Plug and Play Space!
- Great reception area with strong Elevator ID
- Large Kitchen & breakroom
- 2 Offices
- 31 existing workstations!

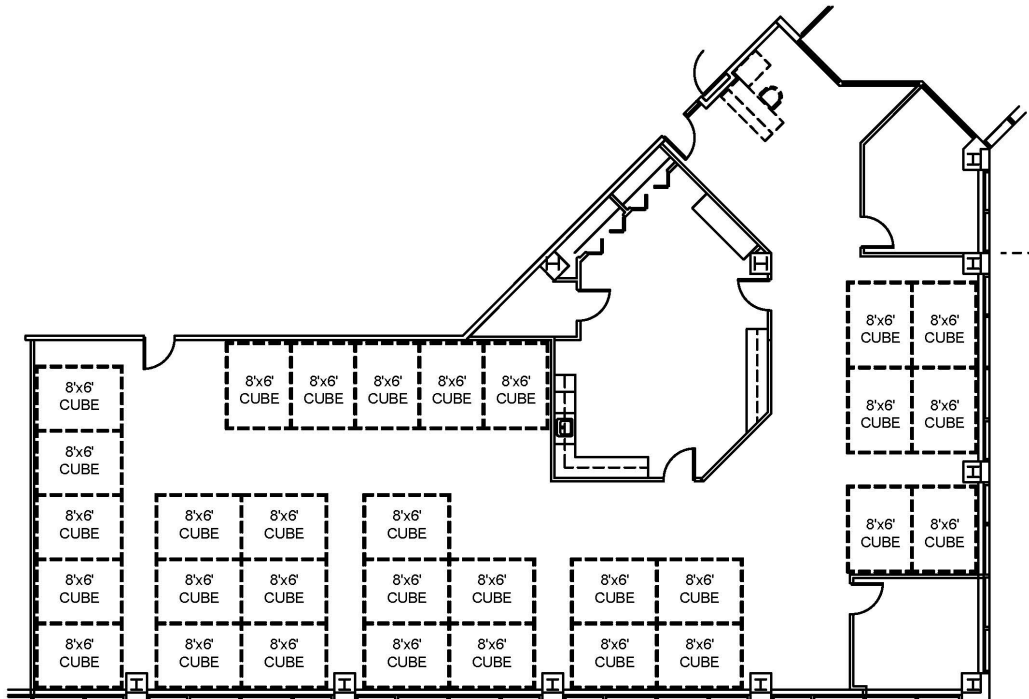
SECOND FLOOR PLAN



DETAILS

Square Feet: 4,999 S.F.
Net Rent: \$15.75/S.F.
OP. Expense: \$9.53/S.F.
Tax: \$2.80/S.F.
Gross Rent: \$28.08/S.F.

SPACE PLAN



HAMILTON PARTNERS - Sponsoring Broker

Philip Sheridan

✉ phil_sheridan@hpre.com

P 6307195567

C 6303032108

David Andrews

✉ da@hpre.com

C 6303270566