

1011 Warrenville Road

Suite 100 & 110

1011 Warrenville Road, Lisle, IL 60532

HAMILTON PARTNERS  
www.hamiltonpartners.com



## DETAILS

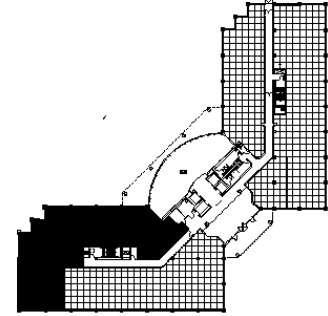
**Square Feet:** 6,510 S.F.  
**Net Rent:** \$15.75/S.F.  
**OP. Expense:** \$7.88/S.F.  
**Tax:** \$2.89/S.F.  
**Gross Rent:** \$28.08/S.F.

## SUITE FEATURES

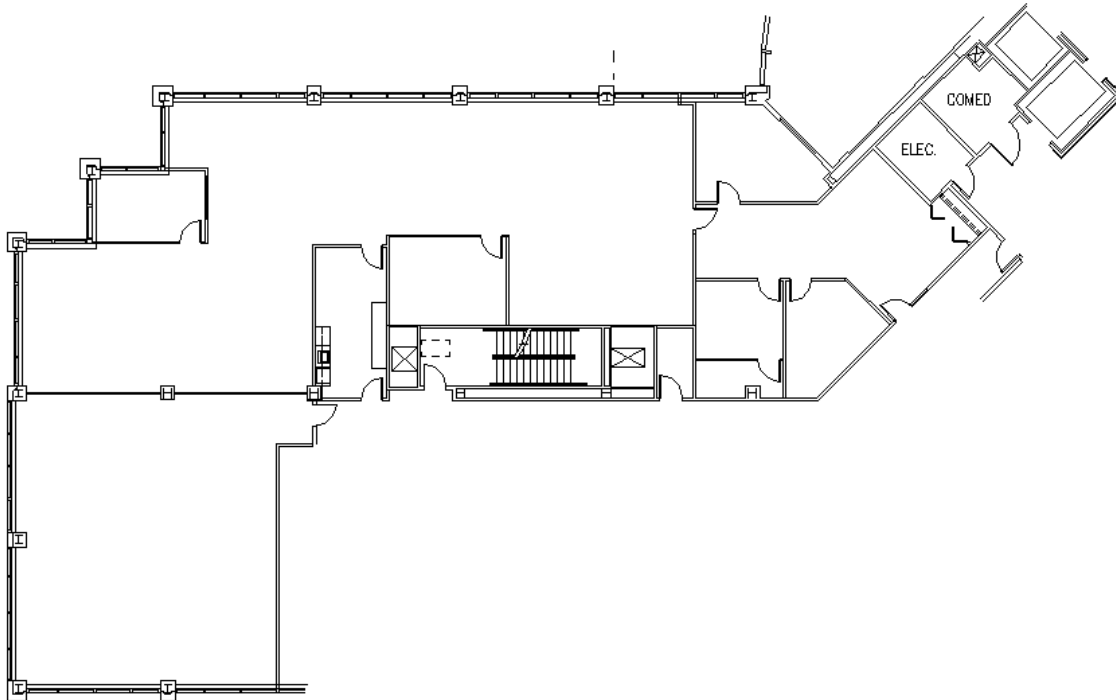
- Available 9/1/2017
- Great identity opportunity in building lobby!
- Beautiful views of pond and atrium
- Kitchen/workroom/conference room within space
- Three private offices
- Efficient plan for workstation layout
- Great natural light

Â

## FIRST FLOOR PLAN



## SPACE PLAN



## HAMILTON PARTNERS - Sponsoring Broker

**David Andrews**

✉ [da@hpre.com](mailto:da@hpre.com)

C 6303270566

**Philip Sheridan**

✉ [phil\\_sheridan@hpre.com](mailto:phil_sheridan@hpre.com)

P 6307195567  
C 6303032108

**Paul O'Connor**

✉ [poconnor@hamiltonpartners.com](mailto:poconnor@hamiltonpartners.com)

C 6309210142