

**Barrington Corporate Center**

Suite 275-600

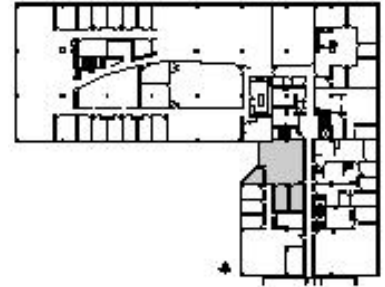
600-1000 Hart Road, Barrington, IL 60010



**SUITE FEATURES**

- On-Site Management
- Health Club
- Deli
- Picnic Area
- Building Conference Room
- Covered Parking Available

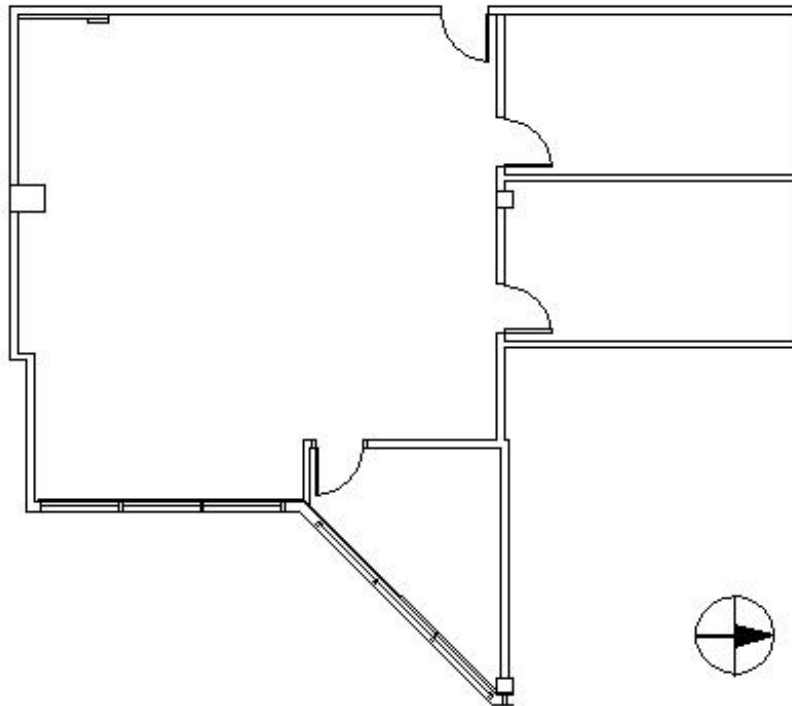
**SECOND FLOOR PLAN**



**DETAILS**

**Square Feet:** 1,597 S.F.  
**Net Rent:** \$13.00/S.F.  
**OP. Expense:** \$6.95/S.F.  
**Tax:** \$1.92/S.F.  
**Gross Rent:** \$21.87/S.F.

**SPACE PLAN**



**HAMILTON PARTNERS - Sponsoring Broker**

**Brian Lunt**

✉ [blunt@hpre.com](mailto:blunt@hpre.com)

P 847-459-2249

F 847-459-8918

**Mike Rolfs**

✉ [mrolfs@hpre.com](mailto:mrolfs@hpre.com)

P 847-459-5561

F 847-459-8918