

Suite 280
3500 Lacey Road
Downers Grove, IL 60515

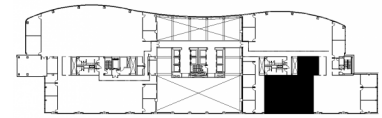
DETAILS

Square Feet: 3,470 S.F.
Net Rent: \$21.00/S.F.
OP. Expense: \$9.21/S.F.
Tax: \$2.17/S.F.
Gross Rent: \$32.38/S.F.

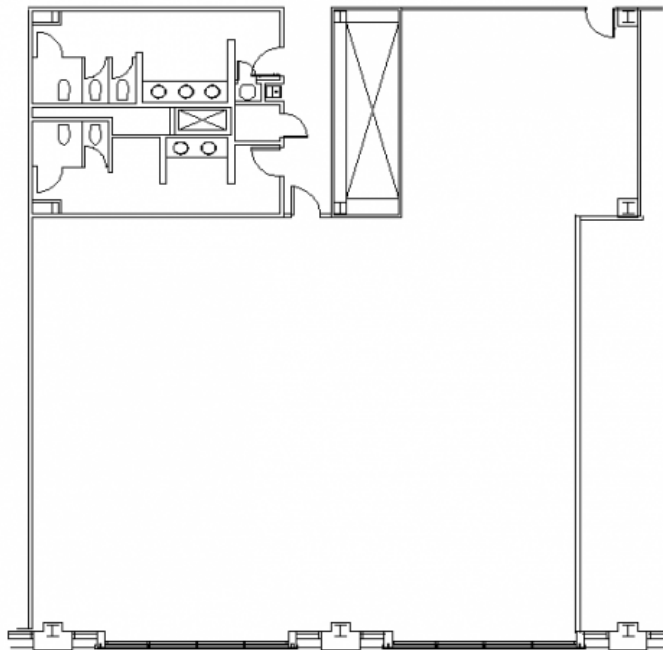
SUITE FEATURES

- Beautiful glass entry
- 50 lineal feet of window line
- Tons of natural light
- Large open area for cubes
- Ready to be customized for your office needs!

SECOND FLOOR PLAN



SPACE PLAN



HAMILTON PARTNERS - Sponsoring Broker

David Andrews

✉ da@hpre.com

C 6303270566

Philip Sheridan

✉ phil_sheridan@hpre.com

P 6307195567

C 6303032108

Paul O'Connor

✉ poconnor@hamiltonpartners.com

P 630-250-4876

F 630-251-8521