

Suite 240  
3500 Lacey Road  
Downers Grove, IL 60515

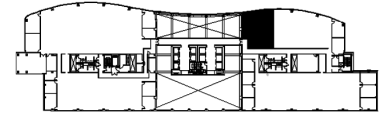
## DETAILS

**Square Feet:** 1,864 S.F.  
**Net Rent:** \$22.00/S.F.  
**OP. Expense:** \$9.51/S.F.  
**Tax:** \$2.48/S.F.  
**Gross Rent:** \$33.99/S.F.

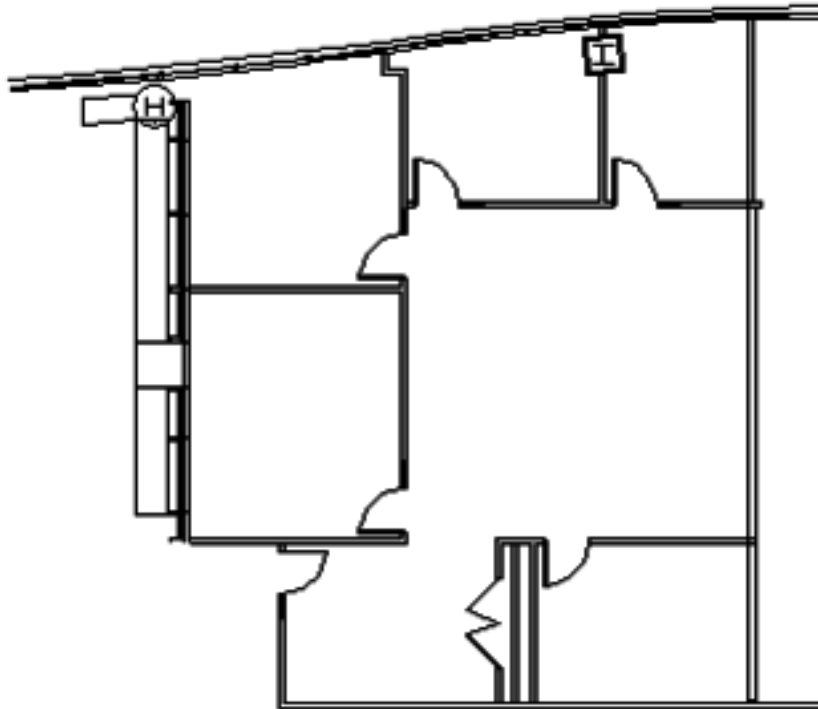
## SUITE FEATURES

- Unparalleled lake and building atrium views
- Fully furnished plug and play space!
- Glass entry off elevator lobby with great identity
- One large executive office
- 2 perimeter private offices
- Large conference room with atrium views
- Reception area
- Workroom

## SECOND FLOOR PLAN



## SPACE PLAN



## HAMILTON PARTNERS - Sponsoring Broker

**David Andrews**

✉ [da@hpre.com](mailto:da@hpre.com)

C 6303270566

**Philip Sheridan**

✉ [phil\\_sheridan@hpre.com](mailto:phil_sheridan@hpre.com)

P 6307195567

C 6303032108