

Suite 350
3500 Lacey Road, Downers Grove, IL
60515

HAMILTON PARTNERS

www.hamiltonpartners.com

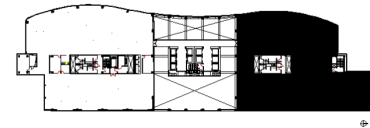
DETAILS

Square Feet: 15,410 S.F.
Net Rent: \$19.50/S.F.
OP. Expense: \$9.21/S.F.
Tax: \$2.17/S.F.
Gross Rent: \$30.88/S.F.

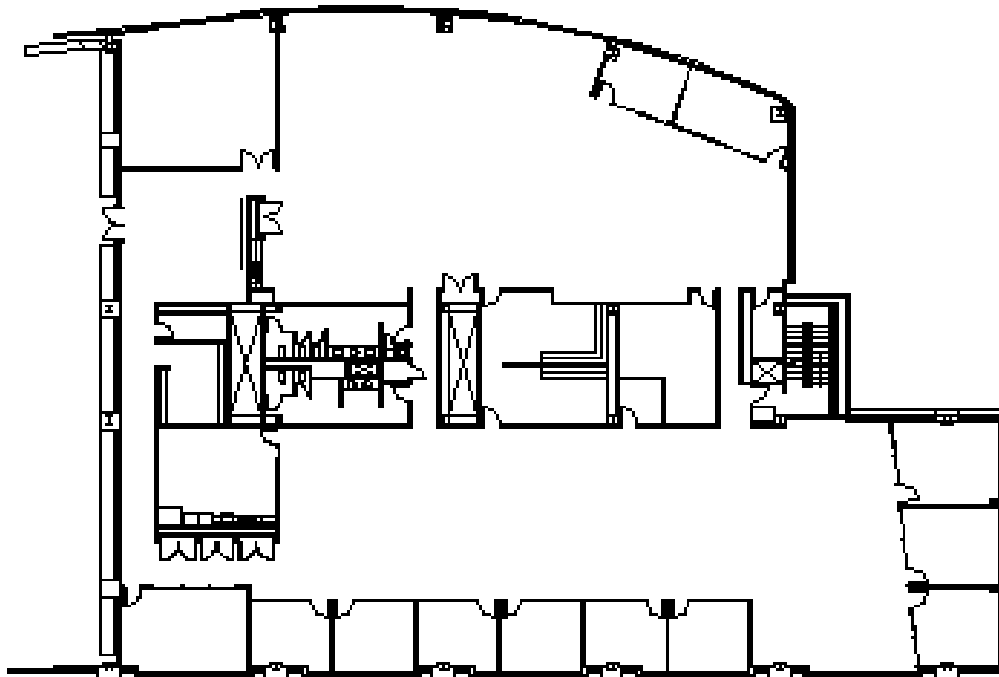
SUITE FEATURES

- Beautiful modern work environment
- Overlooks 3-story atrium
- Elevator lobby ID
- High end finishes
- Aluminum framed glass walls on all offices
- Great open area for multiple workstations
- Beautiful views of pond and Morton Arboretum

THIRD FLOOR PLAN



SPACE PLAN



HAMILTON PARTNERS - Sponsoring Broker

David Andrews

✉ da@hpre.com

C 6303270566

Philip Sheridan

✉ phil_sheridan@hpre.com

P 6307195567

C 6303032108