

220 N. Smith Street

Suite 106

220 N. Smith Street, Palatine, IL 60067



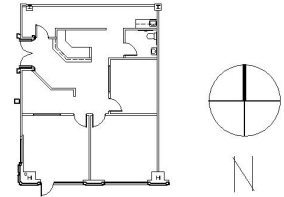
### DETAILS

**Square Feet:** 1,454 S.F.  
**Net Rent:** \$14.00/S.F.  
**OP. Expense:** \$6.31/S.F.  
**Tax:** \$6.31/S.F.  
**Gross Rent:** \$26.62/S.F.

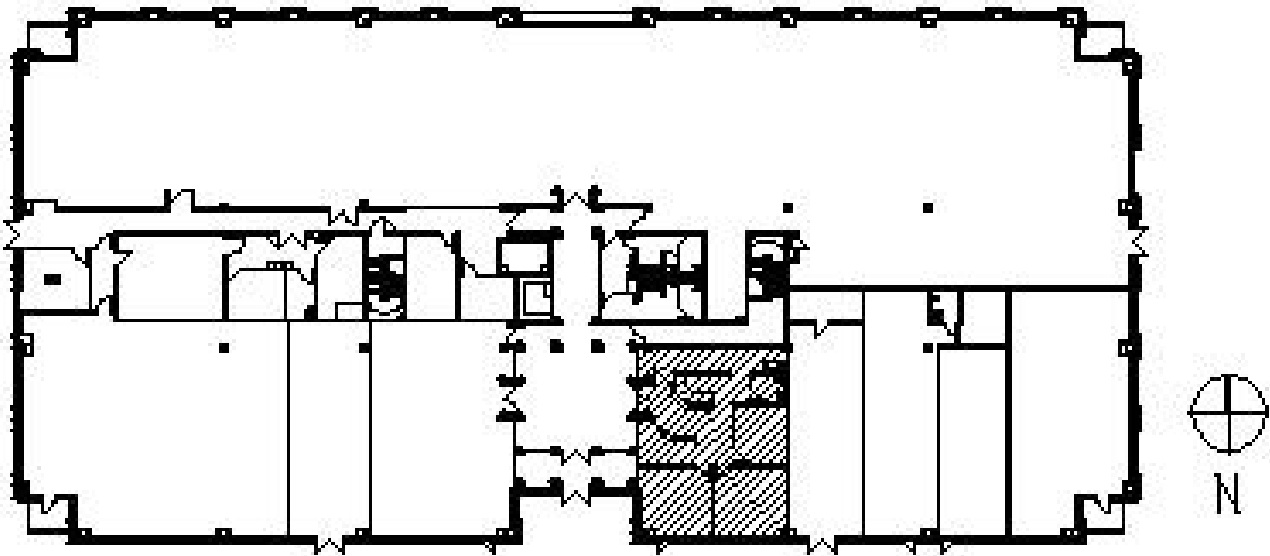
### SUITE FEATURES

- Will Vacate
- 1st Floor Lobby Entrance
- 3 Spacious Executive Windowline Offices
- Reception Area
- Kitchen
- Restroom in Premises
- Copy / Storage Room
- Adjacent to Metra Station

### FIRST FLOOR PLAN



### SPACE PLAN



### HAMILTON PARTNERS - Sponsoring Broker

**Brian Lunt**

[blunt@hpre.com](mailto:blunt@hpre.com)

P 847-459-2249

F 847-459-8918