

220 N. Smith Street  
Suite 104  
220 N. Smith Street, Palatine, IL 60067



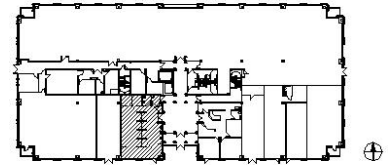
### DETAILS

**Square Feet:** 1,556 S.F.  
**Net Rent:** \$14.00/S.F.  
**OP. Expense:** \$6.31/S.F.  
**Tax:** \$6.31/S.F.  
**Gross Rent:** \$26.62/S.F.

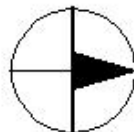
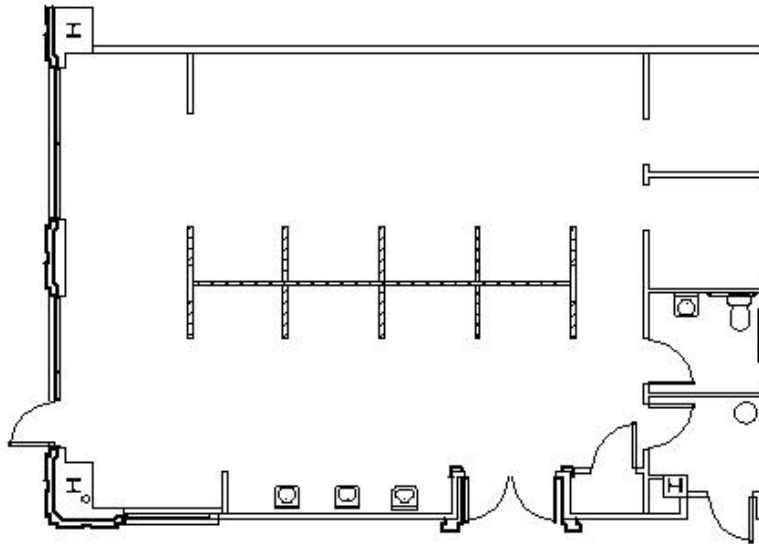
### SUITE FEATURES

- High Visibility Retail Space
- High Ceilings
- Potential for Lobby Exposure
- Great Downtown Palatine Location
- Adjacent to Metra Station
- Connected Parking Deck

### FIRST FLOOR PLAN



### SPACE PLAN



### HAMILTON PARTNERS - Sponsoring Broker

**Brian Lunt**

[blunt@hpre.com](mailto:blunt@hpre.com)

P 847-459-2249

F 847-459-8918

**Mike Rolfs**

[mrolfs@hpre.com](mailto:mrolfs@hpre.com)

P 847-459-5561

F 847-459-8918