

220 N. Smith Street
Suite 408
220 N. Smith Street, Palatine, IL 60067



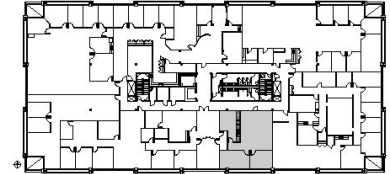
DETAILS

Square Feet: 1,501 S.F.
Net Rent: \$14.00/S.F.
OP. Expense: \$8.50/S.F.
Tax: \$7.52/S.F.
Gross Rent: \$30.02/S.F.

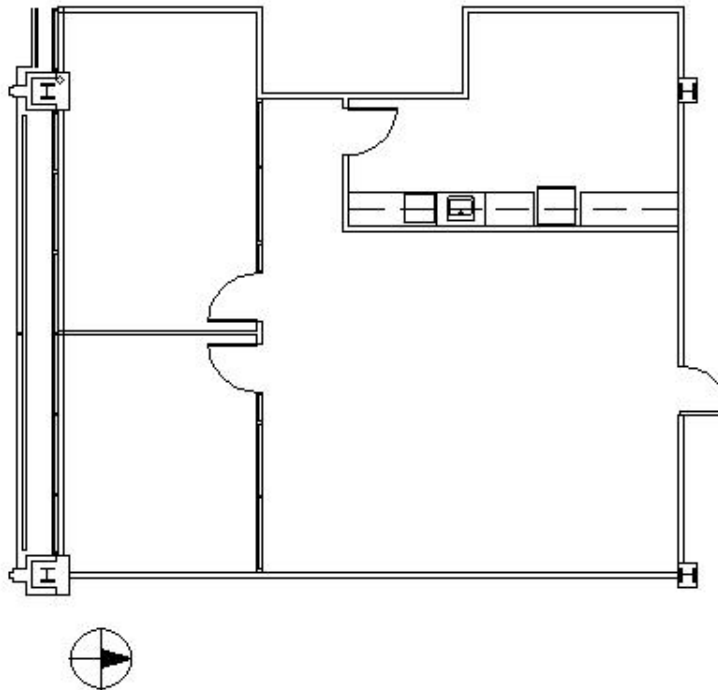
SUITE FEATURES

- 2 Private Offices - 1 Could be utilized as Conference Room
- Open Area for Cubicles / Reception
- Spacious Kitchen with Sink
- Conveniently located directly across from Palatine Metra Station
- Covered Parking Available for All Tenants
- Convenient Downtown Palatine Location with Shops & Restaurants
- Development includes a Dry Cleaners and Sandwich Shop

FOURTH FLOOR PLAN



SPACE PLAN



HAMILTON PARTNERS - Sponsoring Broker

Brian Lunt
✉ blunt@hpre.com
P 847-459-2249
F 847-459-8918

Mike Rolfs
✉ mrolfs@hpre.com
P 847-459-5561
F 847-459-8918