

220 N. Smith Street

Suite 228

220 N. Smith Street, Palatine, IL 60067

HAMILTON PARTNERS

www.hamiltonpartners.com



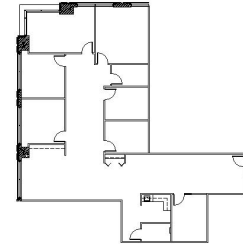
DETAILS

Square Feet: 2,962 S.F.
Net Rent: \$14.00/S.F.
OP. Expense: \$6.31/S.F.
Tax: \$6.31/S.F.
Gross Rent: \$26.62/S.F.

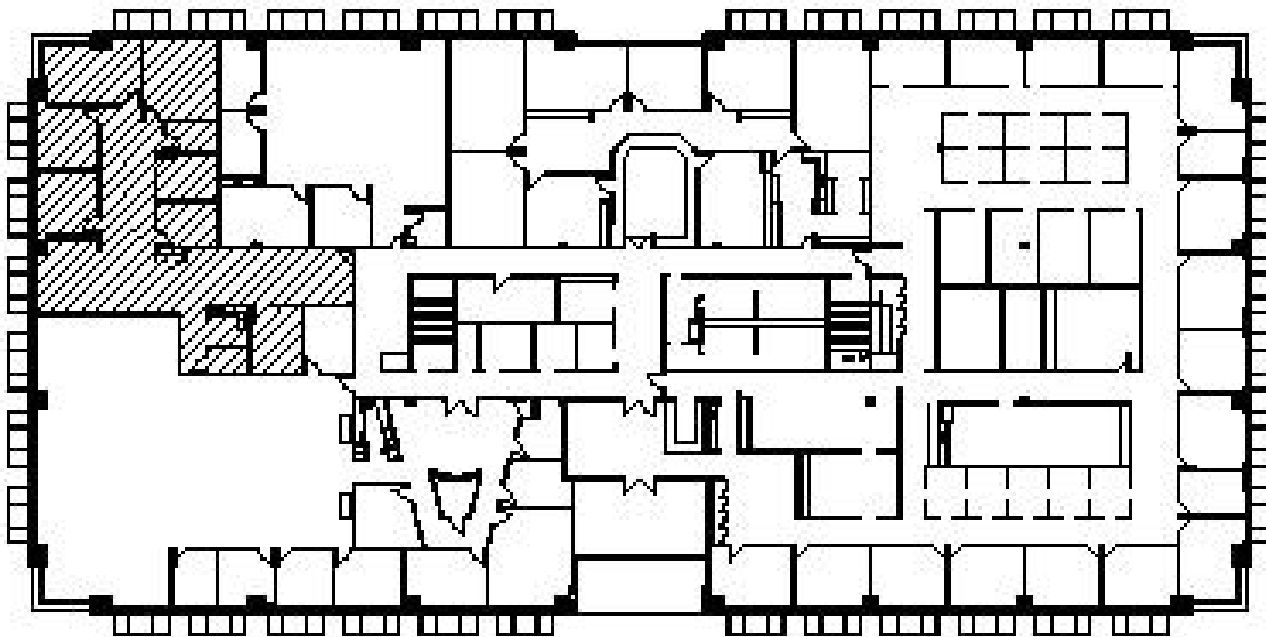
SUITE FEATURES

- 7 Private Offices
- Reception Area
- Kitchen
- Closet
- File Room
- Server Room
- Conveniently located directly across from Palatine Metra Station
- Covered Parking Available for All Tenants
- Convenient Downtown Palatine Location with Shops & Restaurants
- Development includes a Dry Cleaners and Sandwich Shop

SECOND FLOOR PLAN



SPACE PLAN



HAMILTON PARTNERS - Sponsoring Broker

Brian Lunt

✉ blunt@hpre.com

P 847-459-2249

F 847-459-8918