

220 N. Smith Street
Suite 410
220 N. Smith Street, Palatine, IL 60067



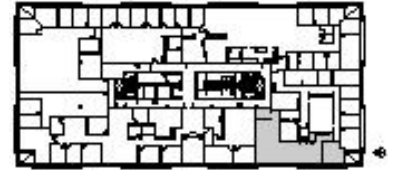
DETAILS

Square Feet: 1,698 S.F.
Net Rent: \$14.00/S.F.
OP. Expense: \$8.15/S.F.
Tax: \$6.75/S.F.
Gross Rent: \$28.90/S.F.

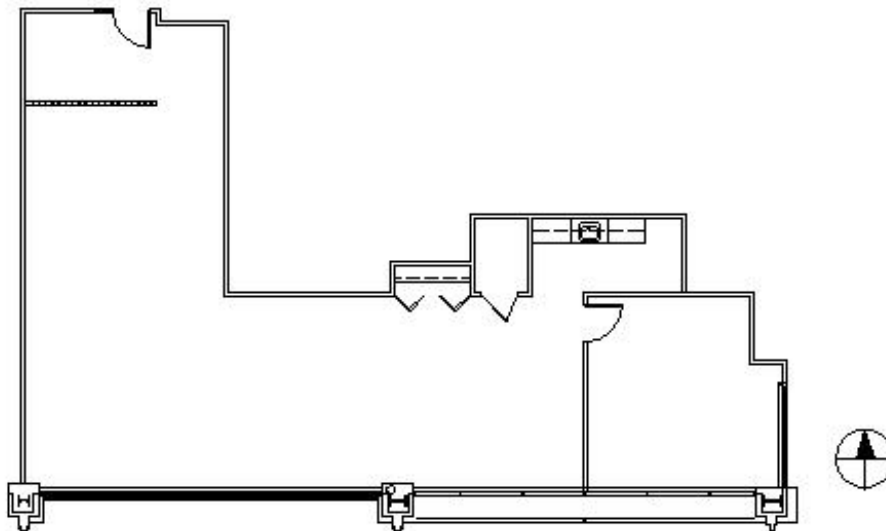
SUITE FEATURES

- Will Vacate
- Reception Area
- 4 Private Offices
- 1 Small Work Room
- 1 Small Storage Area
- Conveniently located directly across from Palatine Metra Station
- Covered Parking Available for All Tenants
- Great Downtown Palatine Location with Shops & Restaurants

FOURTH FLOOR PLAN



SPACE PLAN



HAMILTON PARTNERS - Sponsoring Broker

Brian Lunt

✉ blunt@hpre.com

P 847-459-2249

F 847-459-8918

Mike Rolfs

✉ mrolfs@hpre.com

P 847-459-5561

F 847-459-8918