

220 N. Smith Street
Suite 305
220 N. Smith Street, Palatine, IL 60067



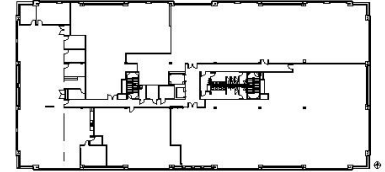
DETAILS

Square Feet: 6,164 S.F.
Net Rent: \$14.00/S.F.
OP. Expense: \$8.42/S.F.
Tax: \$7.40/S.F.
Gross Rent: \$29.82/S.F.

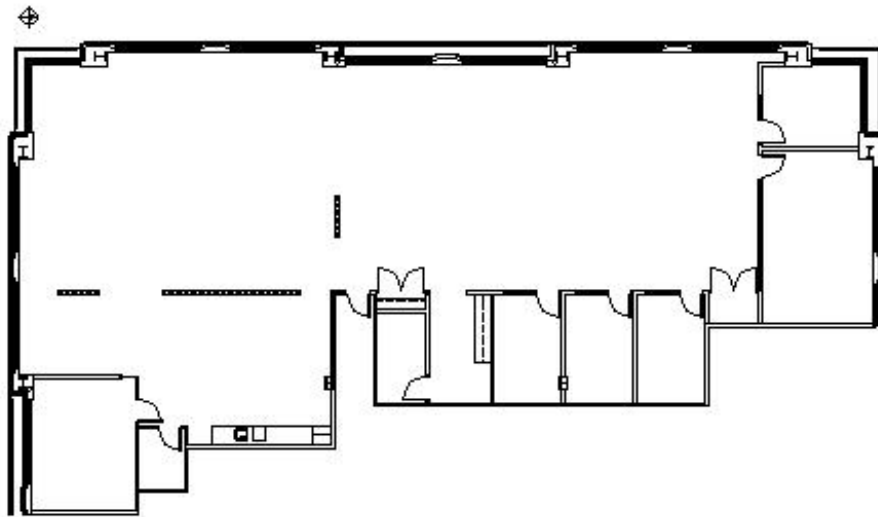
SUITE FEATURES

- High End All Glass Entry Reception
- Open Concept Space with Huddle & Conference Spaces
- 2 Large Conference Rooms
- High End Kitchen / Break Room
- Large Open Areas
- High End Finishes throughout Space
- Adjacent to Palatine Metra Station
- Covered Parking for All Tenants
- Prime Location in Downtown Palatine
- Walking Distance to Restaurants & Shops
- Class A Building with Grand Lobby Entrance

THIRD FLOOR PLAN



SPACE PLAN



HAMILTON PARTNERS - Sponsoring Broker

Brian Lunt

blunt@hpre.com

P 847-459-2249

F 847-459-8918