

220 N. Smith Street  
Suite 102  
220 N. Smith Street, Palatine, IL 60067

[Click for Virtual Tour](#)

HAMILTON PARTNERS  
www.hamiltonpartners.com



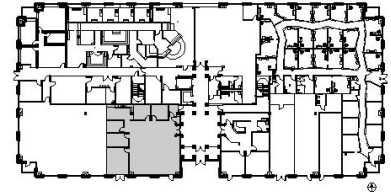
### DETAILS

**Square Feet:** 2,502 S.F.  
**Net Rent:** \$14.00/S.F.  
**OP. Expense:** \$8.42/S.F.  
**Tax:** \$7.40/S.F.  
**Gross Rent:** \$29.82/S.F.

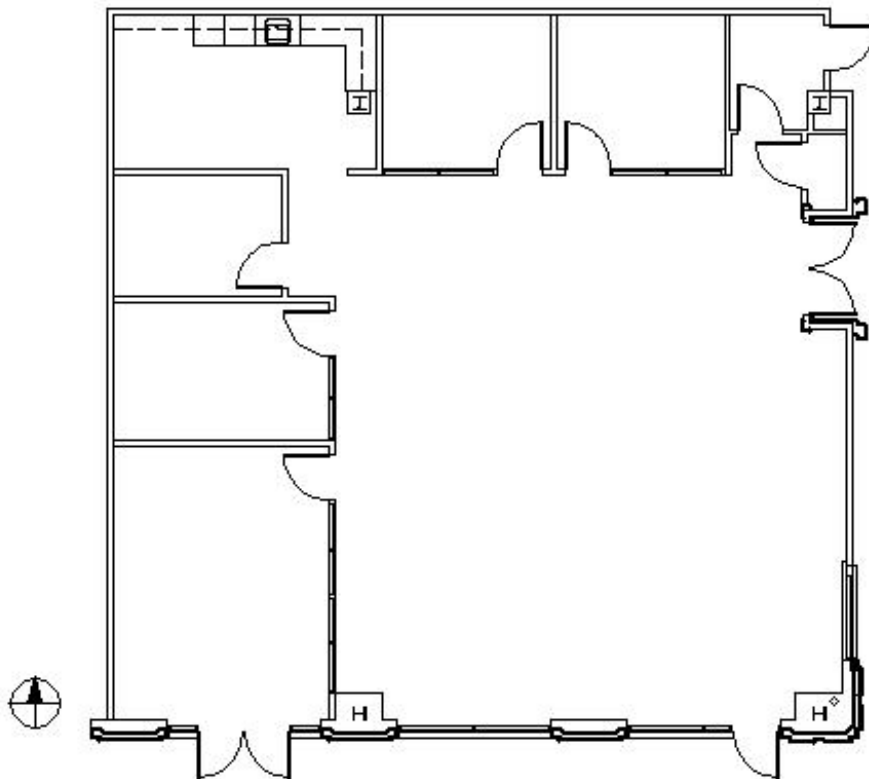
### SUITE FEATURES

- Virtual Tour Here
- Great 1st Floor Lobby Location
- High Ceilings and High End Finishes
- 3 Private Offices
- Conference Room
- Break Room with Counters and Sink
- IT / File Room
- Adjacent to Palatine Metra Station
- Covered Parking for All Tenants
- Prime Location in Downtown Palatine
- Walking Distance to Restaurants & Shops
- Class A Building with Grand Lobby Entrance

### FIRST FLOOR PLAN



### SPACE PLAN



HAMILTON PARTNERS - Sponsoring Broker

**Brian Lunt**

[blunt@hpre.com](mailto:blunt@hpre.com)

P 847-459-2249

F 847-459-8918

**Mike Rolfs**

[mrolfs@hpre.com](mailto:mrolfs@hpre.com)

P 847-459-5561

F 847-459-8918