

220 N. Smith Street
Suite 116
220 N. Smith Street, Palatine, IL 60067



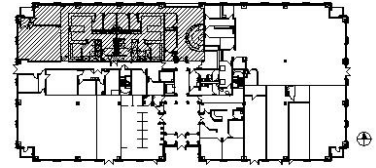
DETAILS

Square Feet: 6,276 S.F.
Net Rent: \$14.00/S.F.
OP. Expense: \$8.15/S.F.
Tax: \$6.75/S.F.
Gross Rent: \$28.90/S.F.

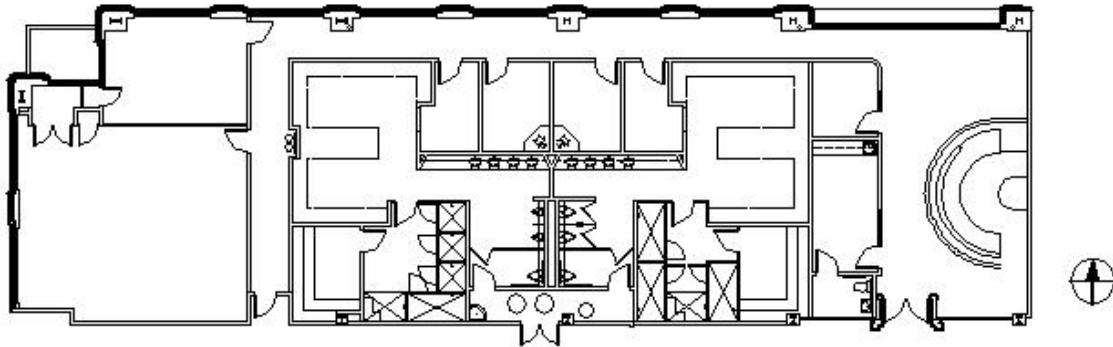
SUITE FEATURES

- Prime Location in Downtown Palatine
- High Ceilings
- Abundance of Natural Light
- Was Previously Health Club Space
- Adjacent to Palatine Metra Station
- Covered Parking for All Tenants
- Walking Distance to Restaurants & Shops
- Class A Building with Grand Lobby Entrance

FIRST FLOOR PLAN



SPACE PLAN



HAMILTON PARTNERS - Sponsoring Broker

Brian Lunt

blunt@hpre.com

P 847-459-2249

F 847-459-8918

Mike Rolfs

mrolfs@hpre.com

P 847-459-5561

F 847-459-8918