

220 N. Smith Street
Suite 102-104
220 N. Smith Street, Palatine, IL 60067



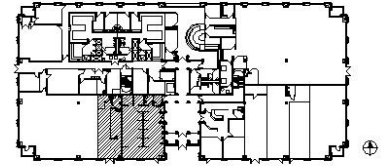
DETAILS

Square Feet: 2,502 S.F.
Net Rent: \$14.00/S.F.
OP. Expense: \$6.31/S.F.
Tax: \$6.31/S.F.
Gross Rent: \$26.62/S.F.

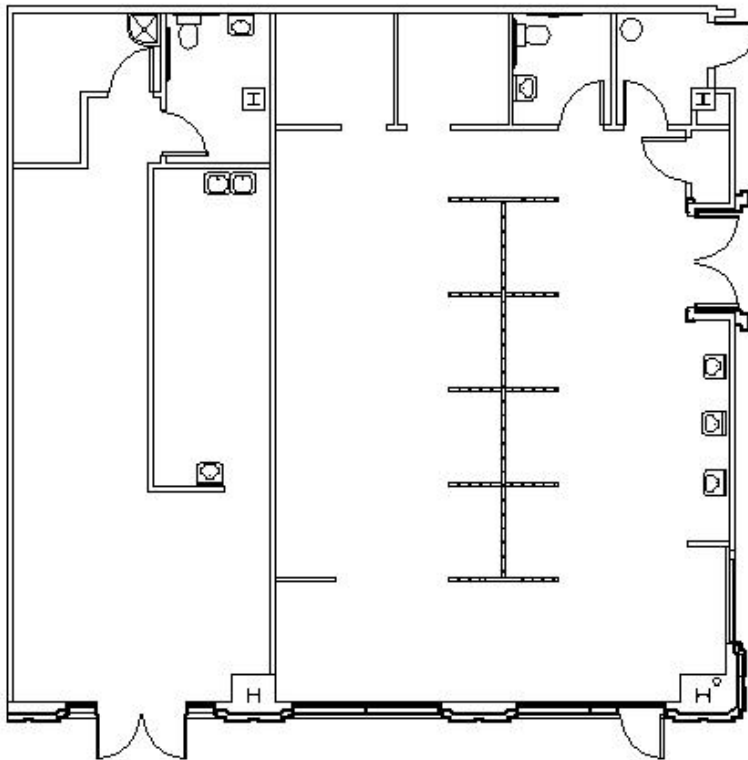
SUITE FEATURES

- Great Retail Location
- High End Finishes
- Potential Lobby Exposure
- Adjacent to Palatine Metra Station
- Covered Parking for All Tenants
- Prime Location in Downtown Palatine
- Walking Distance to Restaurants & Shops
- Class A Building with Grand Lobby Entrance

FIRST FLOOR PLAN



SPACE PLAN



HAMILTON PARTNERS - Sponsoring Broker

Brian Lunt

blunt@hpre.com

P 847-459-2249

F 847-459-8918

Mike Rolfs

mrolfs@hpre.com

P 847-459-5561

F 847-459-8918