

220 N. Smith Street  
Suite 430  
220 N. Smith Street, Palatine, IL 60067



## DETAILS

**Square Feet:** 4,572 S.F.  
**Net Rent:** \$14.00/S.F.  
**OP. Expense:** \$6.31/S.F.  
**Tax:** \$6.31/S.F.  
**Gross Rent:** \$26.62/S.F.

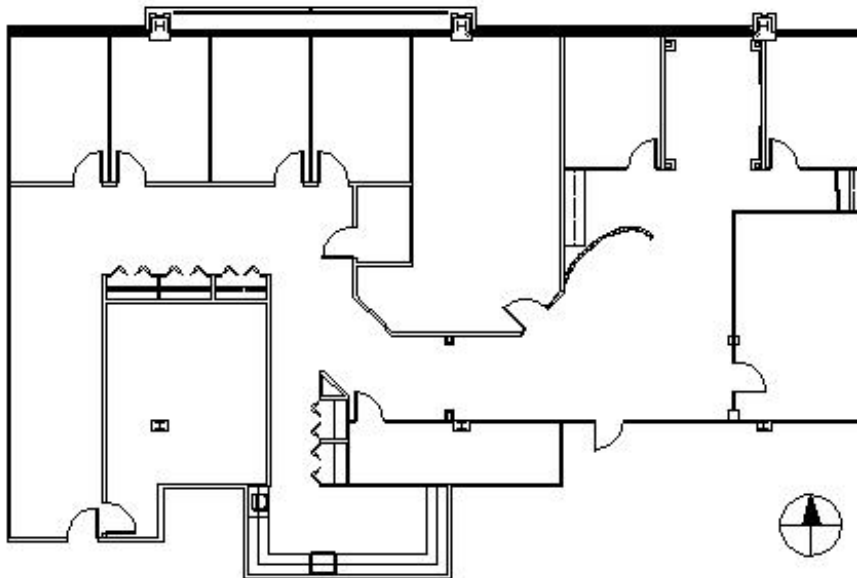
## SUITE FEATURES

- Prime Location in Downtown Palatine
- 6 Private Offices
- 2 Conference Rooms
- High End Finishes
- Elevator Lobby Exposure
- Adjacent to Palatine Metra Station
- Covered Parking for All Tenants
- Walking Distance to Restaurants & Shops
- Class A Building with Grand Lobby Entrance

## Fourth FLOOR PLAN



## SPACE PLAN



## HAMILTON PARTNERS - Sponsoring Broker

### Brian Lunt

[blunt@hpre.com](mailto:blunt@hpre.com)

P 847-459-2249

F 847-459-8918

### Mike Rolfs

[mrolfs@hpre.com](mailto:mrolfs@hpre.com)

P 847-459-5561

F 847-459-8918