

220 N. Smith Street
Suite 450
220 N. Smith Street, Palatine, IL 60067



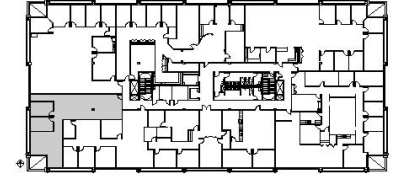
DETAILS

Square Feet: 1,933 S.F.
Net Rent: \$14.00/S.F.
OP. Expense: \$7.87/S.F.
Tax: \$6.59/S.F.
Gross Rent: \$28.46/S.F.

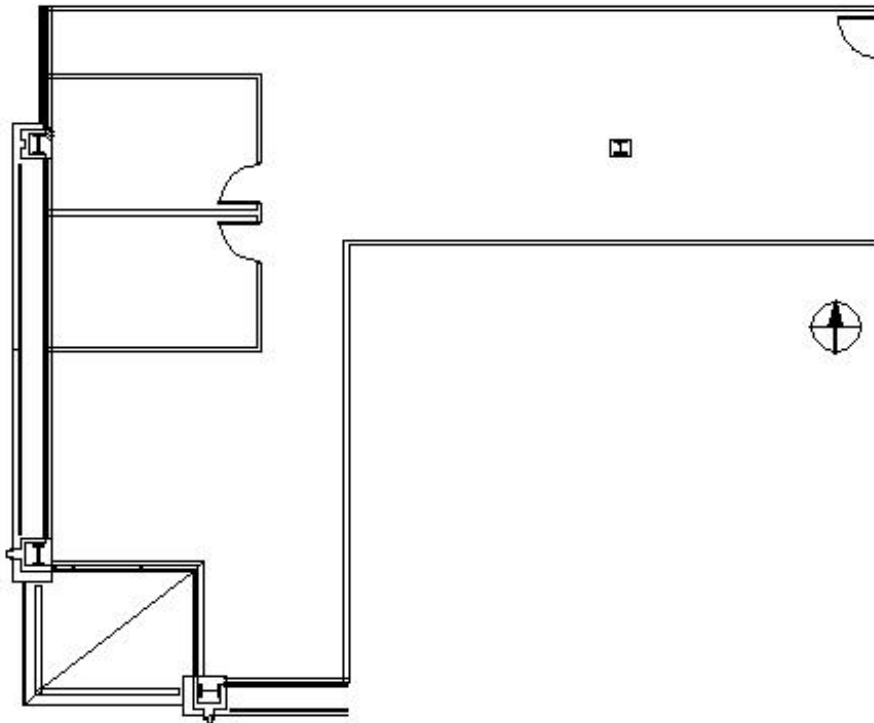
SUITE FEATURES

- 2 Private Offices
- Large Reception Area
- Open Area
- Convenient Downtown Palatine Location
- Close to Metra Station
- Covered Parking

FOURTH FLOOR PLAN



SPACE PLAN



HAMILTON PARTNERS - Sponsoring Broker

Brian Lunt

✉ blunt@hpre.com

P 847-459-2249

F 847-459-8918

Mike Rolfs

✉ mrolfs@hpre.com

P 847-459-5561

F 847-459-8918